



## PRACTICAL GUIDEBOOK FOR PARTICIPANTS

### Welcome

We are delighted to welcome you to the **EPTRI General Assembly & Scientific Meeting**, held in Warsaw at the Instytut “Pomnik-Centrum Zdrowia Dziecka” (Children’s Memorial Health Institute, CZD).

This short guidebook provides practical information regarding:

- *meeting venue*
- *transportation*
- *accommodations*

---

### Meeting Venue

Instytut “Pomnik – Centrum Zdrowia Dziecka”

#### Address:

Aleja Dzieci Polskich 20  
04-730 Warsaw, Poland



The Scientific Meeting sessions will be held in the **Centrum Dydaktyczne (Teaching Center)** located within the CZD main building.

After entering the CZD main building through the **“Wejście główne” (Main Entrance)**:

1. Follow the signs for **“Centrum Dydaktyczne”**
2. Proceed downstairs to the conference area

For the exact location and directions, please use the **Google Maps link below** or **scan the QR code**.

[[Google Maps – Children's Memorial Health Institute \(CZD\)](#)]



---

### Transportation

How to get to the Instytut „Pomnik – Centrum Zdrowia Dziecka”

[From Warsaw Chopin Airport \(WAW\)](#)

 [Directions \(click to open map\)](#)

*By taxi/Uber/Bolt*

- **Approximate travel time:** 25–35 minutes
- **Estimated cost:** approximately 60–100 PLN (15-25 EUR) depending on traffic

*By public transport*

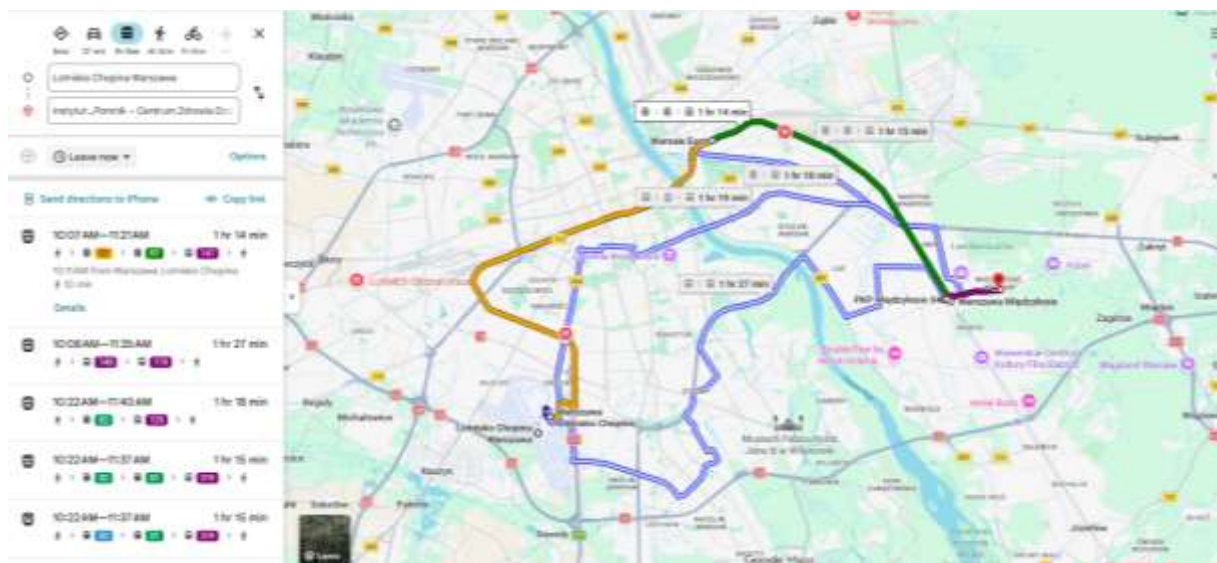
1. Take:
  - SKM train

# EPTRI GENERAL ASSEMBLY & SCIENTIFIC MEETING

28-29 July 2026 – Warsaw, Poland

- or bus 175 (from bus stop „Lotnisko Chopina – Przyłoty 02”) toward the city center then transfer to:
    - SKM S1 train toward Otwock
    - or suburban trains KM / R9
- and Exit at **Warszawa Międzylesie**
2. Continue by:
- bus **119** or **147** (from bus stop „PKP Międzylesie 04”)
  - or a short walk

**Approximate travel time:** 50–70 minutes



[From Warsaw Modlin Airport \(WMI\)](#)

[📍 Directions \(click to open map\)](#)

*By taxi/Uber/Bolt*

- **Approximate travel time:** 45–60 minutes
- **Estimated cost:** approximately 140–220 PLN (35–55 EUR), depending on traffic and time of day

*By public transport*

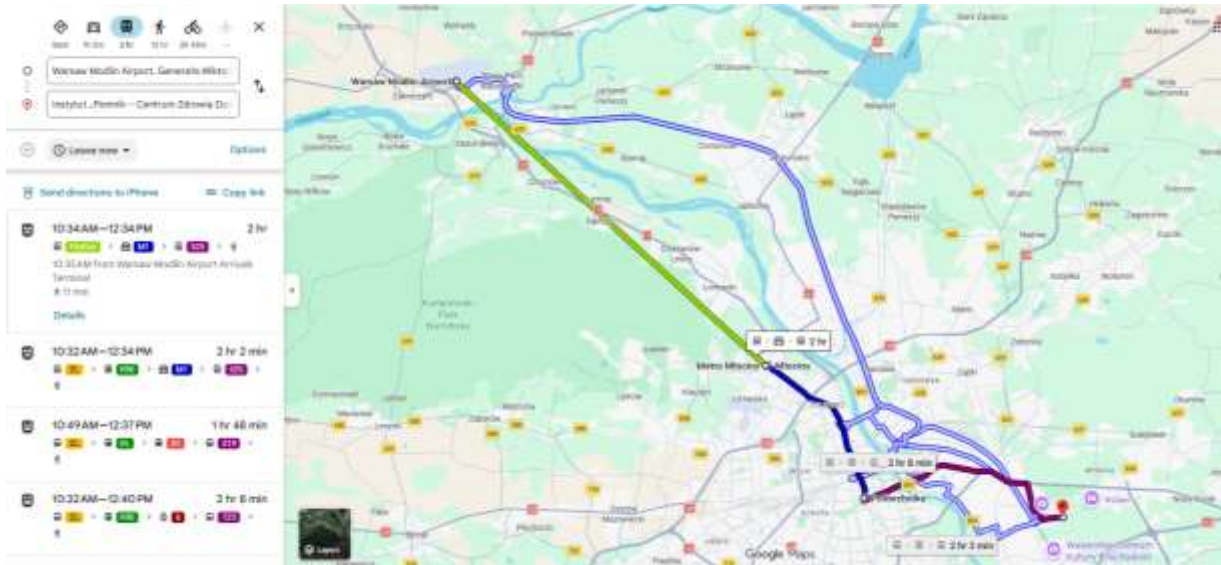
1. Take the airport shuttle bus to **Modlin Railway Station** (approximately 10 minutes).
2. Continue by **Koleje Mazowieckie (KM)** train toward Warsaw and exit at:
  - **Warszawa Centralna**, then transfer to:
    - **SKM S1** toward Otwock, or
    - other local rail connections toward **Warszawa Międzylesie**
3. Exit at **Warszawa Międzylesie**.
4. Continue by:
  - bus **119** or **147** (from bus stop “PKP Międzylesie 04”),
  - taxi,
  - or a short walk to the CZD campus.

**Approximate travel time:** 75–100 minutes.

**Alternative option:** Direct airport buses (ModlinBus, Contbus or FlixBus) connect WMI with central Warsaw. From the city centre, continue to Warszawa Międzylesie by train or taxi.

# EPTRI GENERAL ASSEMBLY & SCIENTIFIC MEETING

28-29 July 2026 – Warsaw, Poland



From Warsaw Central Railway Station (Warszawa Centralna)

[Directions \(click to open map\)](#)

By taxi/Uber/Bolt

- **Approximate travel time:** 25–40 minutes

By public transport

1. Take bus **525** (to go directly to the CZD) or SKM/SKM-connected transport
2. Continue with:
  - o SKM S1 train toward Otwock
  - o or KM train
3. Exit at **Warszawa Międzylesie**



Approximate travel time: 45-60 minutes.

# EPTRI GENERAL ASSEMBLY & SCIENTIFIC MEETING

28-29 July 2026 – Warsaw, Poland

## Useful Transport Tips

- **Warsaw Chopin Airport (WAW)** is the closest airport to the meeting venue and offers the most convenient connection to the CZD.
- **Warsaw Modlin Airport (WMI)**, located approximately 40 km north of Warsaw, is mainly served by low-cost airlines. Please note that travel times to the CZD are significantly longer than from Warsaw Chopin Airport.
- The nearest railway station to the CZD is **Warszawa Międzylesie**.
- Uber and Bolt are widely available and operate efficiently throughout Warsaw.
- Traffic can be heavy during morning and afternoon rush hours. Please allow extra travel time when planning your journey.

## Recommended Navigation Apps

- Google Maps
- Jakdojade (public transport planner): <https://jakdojade.pl/warszawa>

---

## Accommodations

### 1. Closest Option – On-site Hotel

#### Obiekt Hotelarski Patron

##### [Location](#)

<https://www.patron.waw.pl>

Located within the CZD campus, offering the most convenient access to the meeting venue.



### 2. Nearby Option

#### DoubleTree by Hilton Hotel & Conference Centre Warsaw

##### [Location](#)

<https://www.doubletreewarsaw.pl>

A modern hotel offering comfortable accommodation and conference facilities, located within a short driving distance of the CZD.



### 3. City Centre Option

#### Sofitel Warsaw Victoria

##### [Location](#)

<https://www.sofitel-victoria-warsaw.com/>

Located in the heart of Warsaw, close to the Old Town, the Royal Castle, and the Polish National Opera, offering convenient access to the city's main cultural and historical attractions.



---

## We Wish You a Pleasant Stay in Warsaw

Thank you for participating in the **EPTRI General Assembly & Scientific Meeting 2026**.

We hope this guidebook helps you plan your visit and ensures a smooth and enjoyable stay in Warsaw. We wish you an inspiring meeting, fruitful discussions, and valuable networking opportunities within the EPTRI community.

Safe travels, and we look forward to seeing you in Warsaw!