



EUROPEAN PAEDIATRIC TRANSLATIONAL RESEARCH INFRASTRUCTURE

# Thematic Research Platform on 'Developmental Pharmacology'

**Evelyne Jacqz-Aigrain, Ales Stuchlik, Miriam Mooij,  
Saskia de Wildt,  
Tessa van der Geest**

**Radboudumc, Nijmegen, The Netherlands**

EPTRI Stakeholders Roundtable – July 9<sup>th</sup>, 2020



This project has received funding from the European Union's Horizon 2020 research and innovation programme under Grant Agreement No 777554

# Focus of the Developmental Pharmacology Platform

Basic Research



Clinical drug  
development in  
Paediatrics

Close information  
gaps on  
developmental  
biology

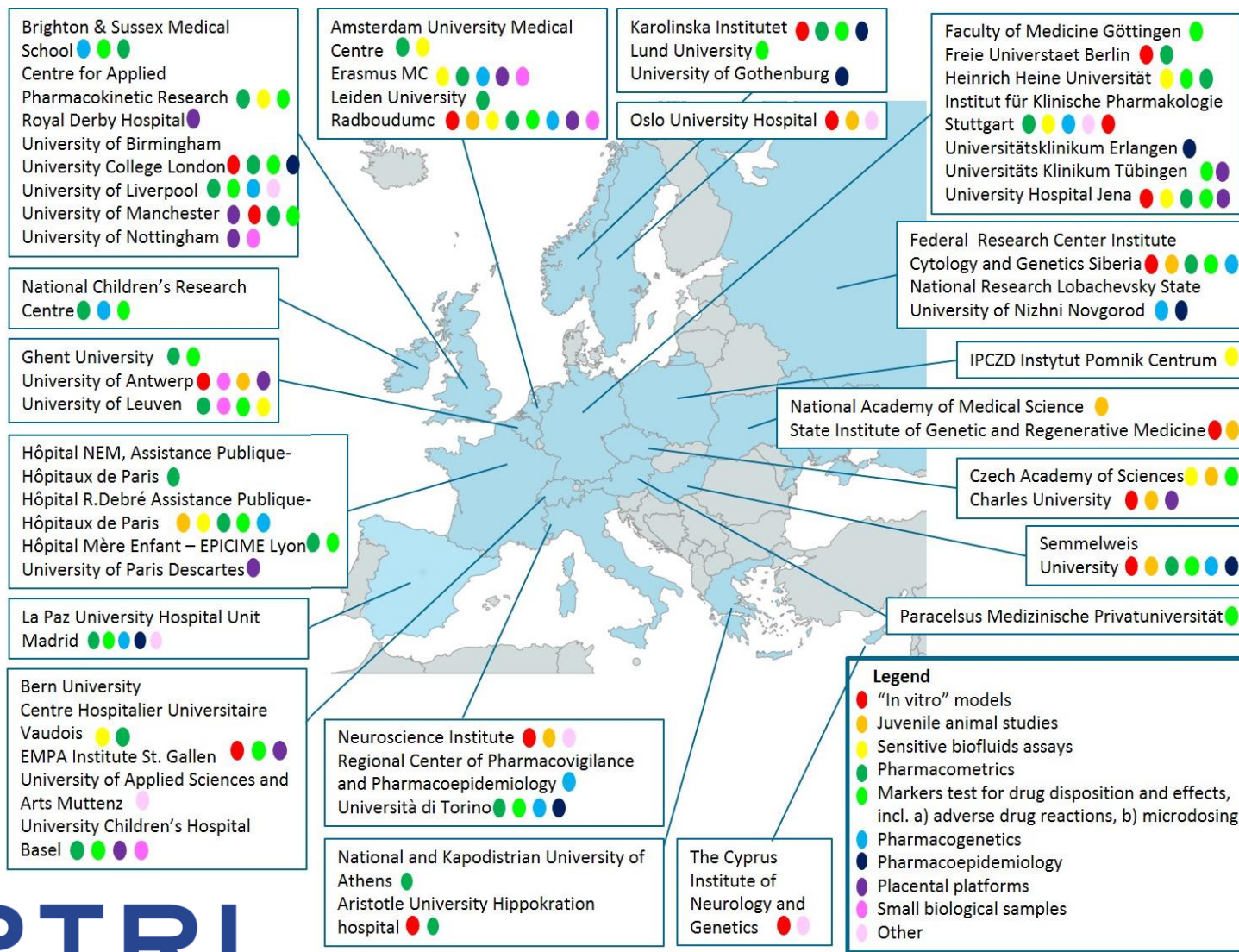
Provide  
transnational  
access

Support studies  
underpinning  
optimal paediatric  
dose selection

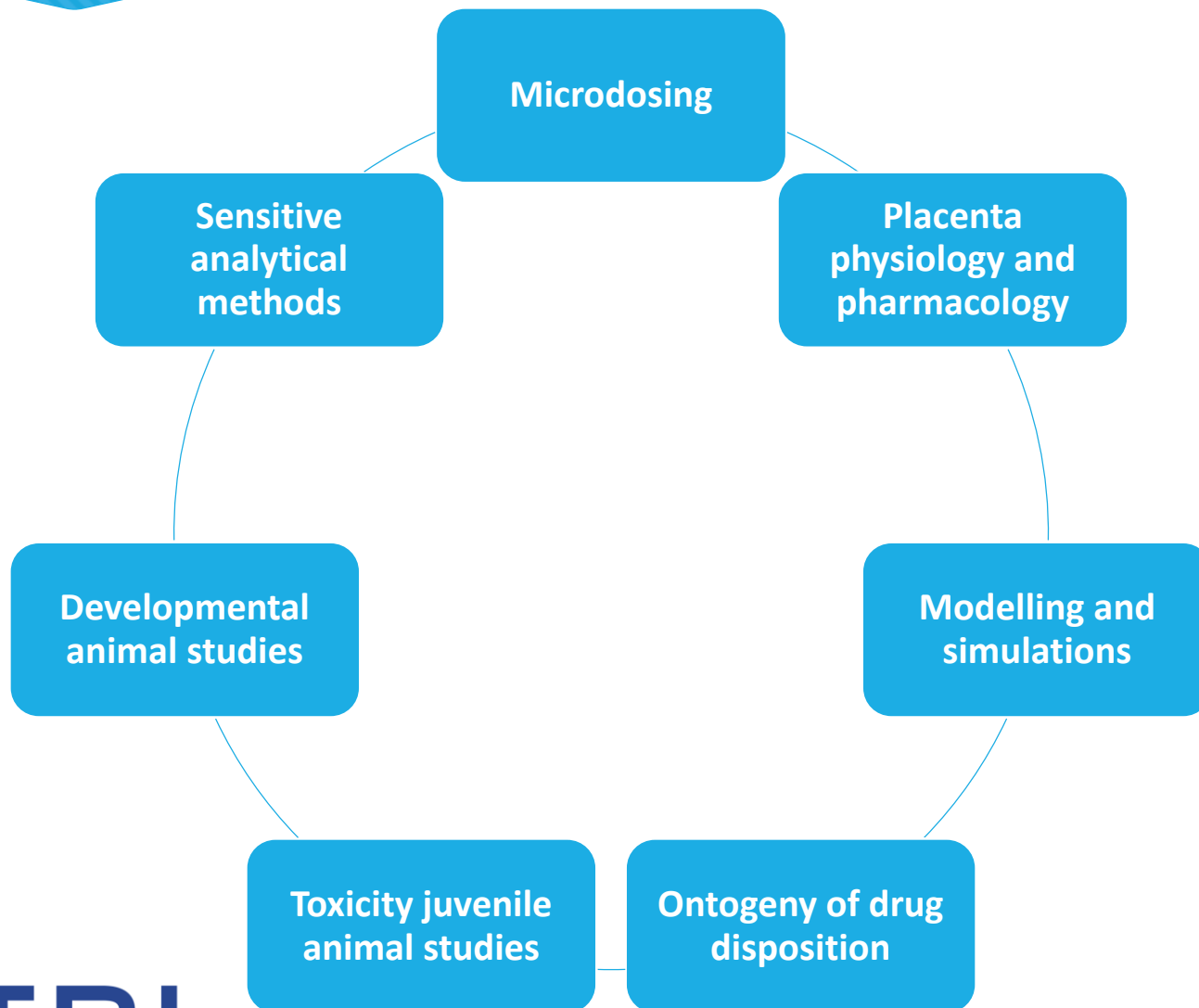
# Needs within Developmental Pharmacology

- Capacity to support the underlying science needed for clinical drug evaluation for children
  - Involvement of multiple experts and competences from (paediatric) pharmacologists, chemists, toxicologists, pharmacometricians and regulatory experts
- Provide access to **combined** paediatric expertise and technology through the platform

# Partners and Facilities



# Service areas



# Transnational access to developmental pharmacology

First services to be provided

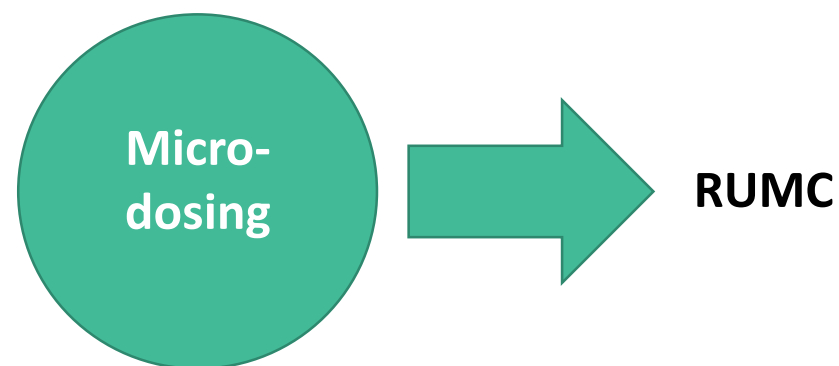
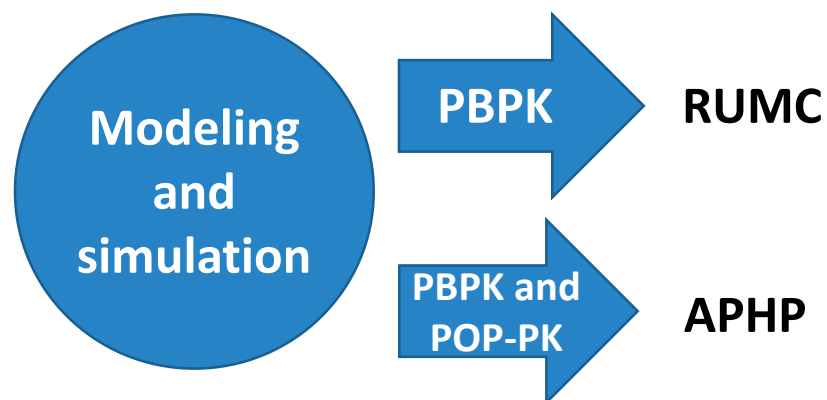
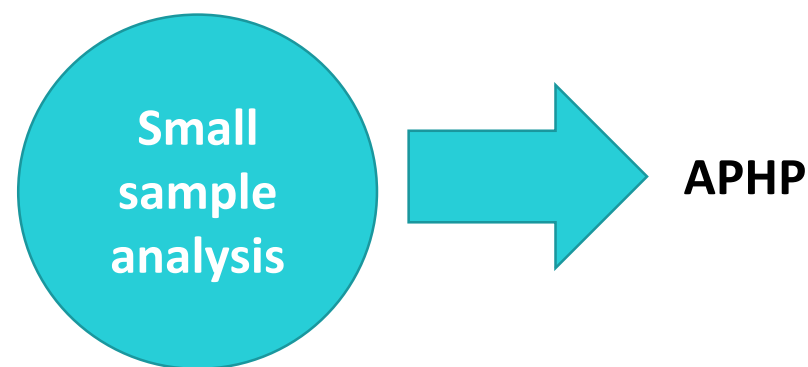
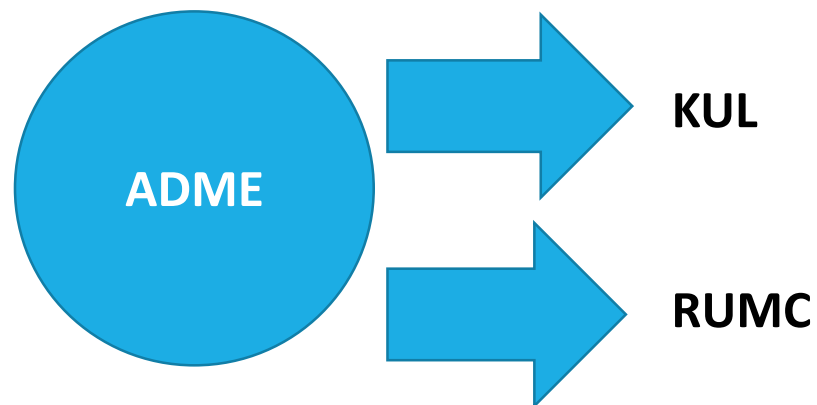
ADME

Modeling  
and  
simulation

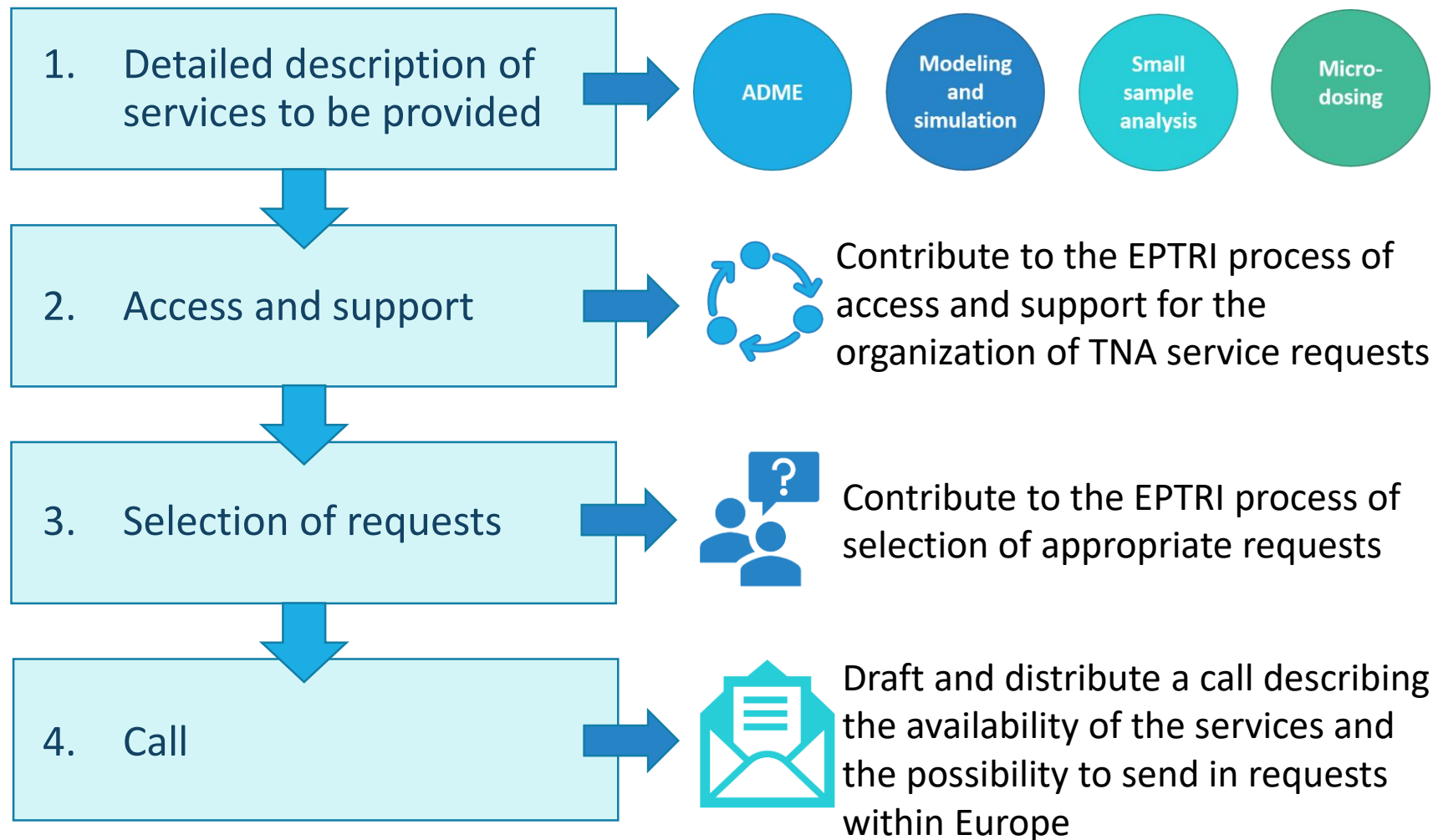
Small  
sample  
analysis

Micro-  
dosing

# Service coordination

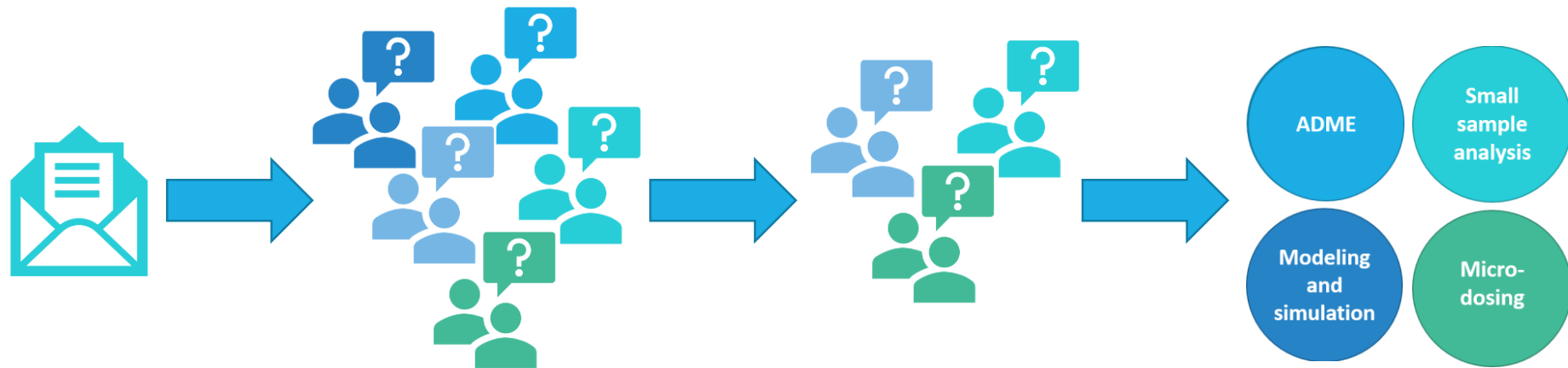


# EPTRI Workflow





# Selected requests



# Reporting

1. Services, processes, call



Service description, access and support, selection of requests, call

2. Annual report  
'Overview of requests'



Selected proposals, users, access units

3. Added value of  
provided services



Scientific highlights



Thank you!

# Thematic Research Platform

## On 'Developmental Pharmacology'