



EUROPEAN PAEDIATRIC TRANSLATIONAL RESEARCH INFRASTRUCTURE

Open Lab
for
Robotics and Imaging
in
Industry and Medicine
Maria Henke – University Lübeck

EPTRI Stakeholders Roundtable - Virtual Meeting - July 9th, 2020



This project has received funding from the European Union's Horizon 2020 research and innovation programme under Grant Agreement No 777554

RESEARCH PLATFORM

Structure

Joint institution of

- Institute for Robotics and Cognitive Systems
 - Institute of Medical Engineering
- at the University Lübeck

Mission

We offer access to our expertise and equipment to tackle technical challenges.

EQUIPMENT

- Robots serial, parallel, collaborative
- Tracking Systems optical, video optical, magnetic
- Measurement Devices Spectrometer, Oscilloscope etc.
- 3D-Printer MJM, SLA, FDM
- Imaging Systems
MRI, CT, X-ray, Ultrasound
- High Performance Cameras
3D-Scanner, ToF, NIR

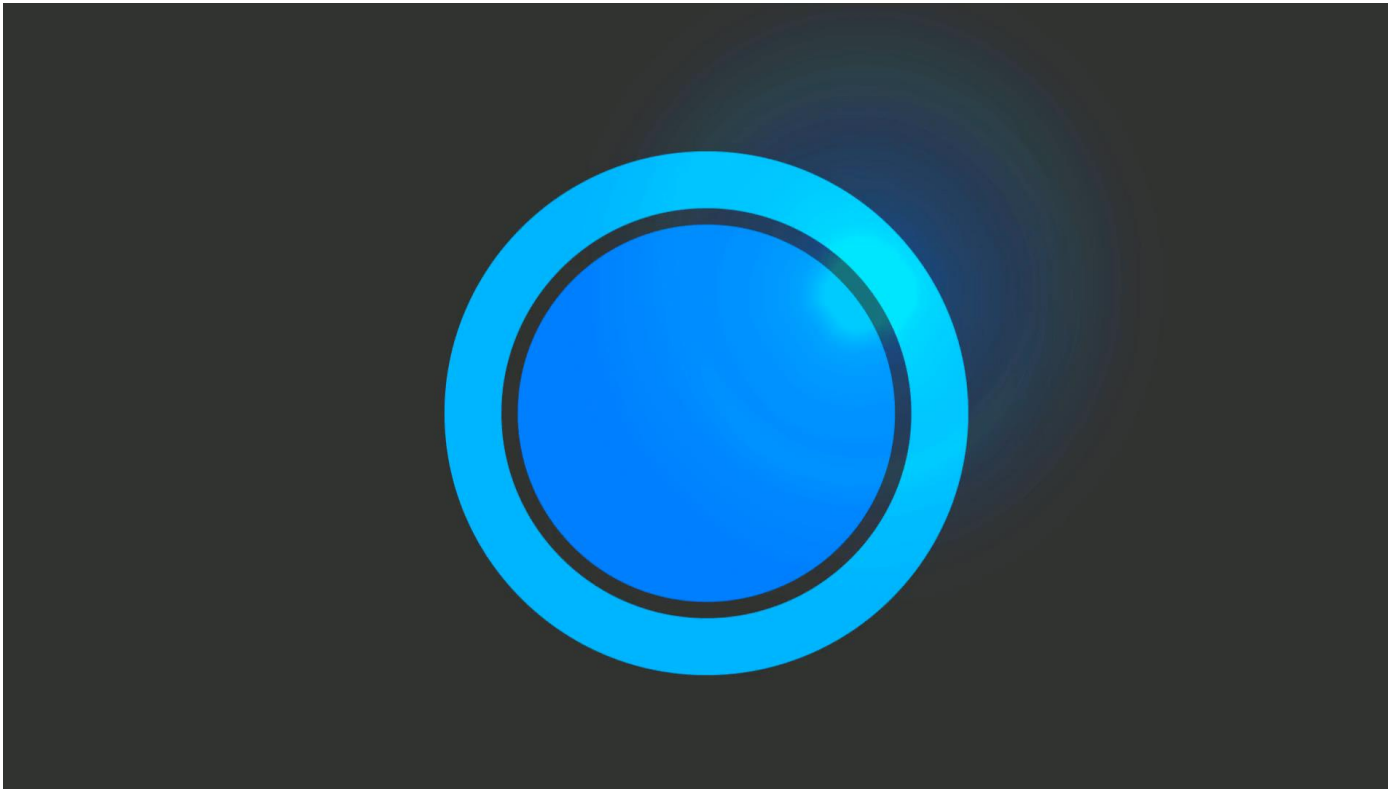


WE OFFER



PROJECT ILLUSTRATIONS

Mobile Intelligent Robotic Agent for Navigation and Assistance (MIRANA)



Intelligent
Path Planning

Chat Bot (NLI)

Detection of
Persons

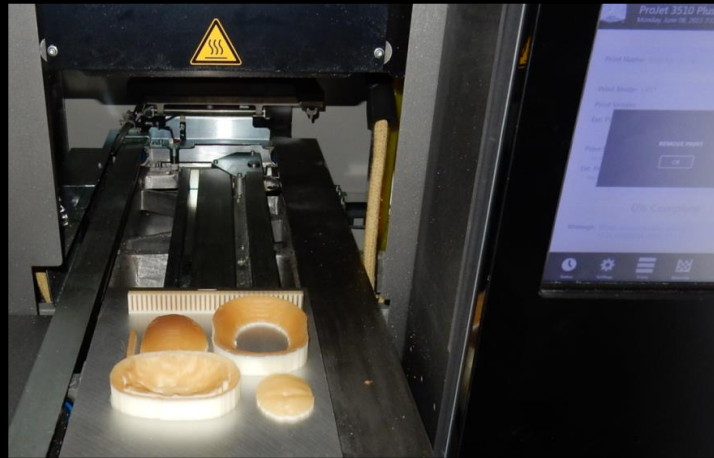
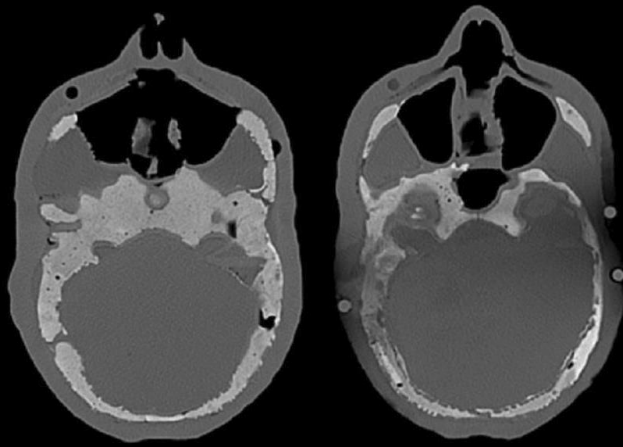
Person Guiding

Global
Navigation

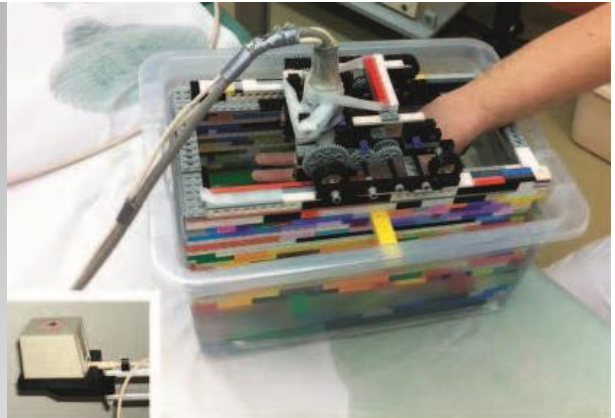
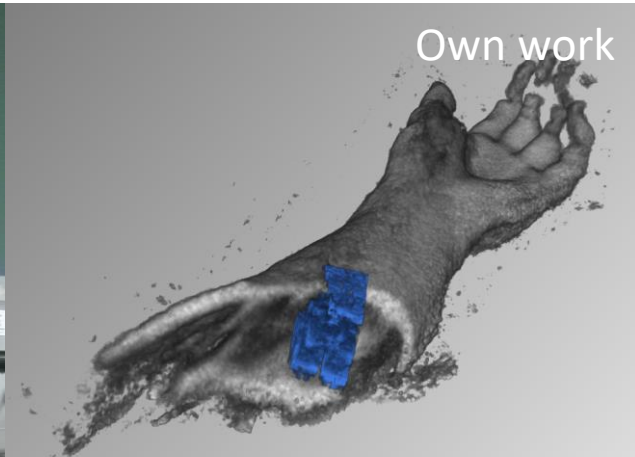
1. Personal guide
2. Info point

<https://mirana.rob.uni-luebeck.de/>

PROJECT ILLUSTRATIONS



PROJECT ILLUSTRATIONS



Karlas et al., Ultraschall
Med, 40(4):512-514

Jauer et al., Curr Dir
Biomed Eng, 1(1):286-289



Thank you for your attention



Kontakt:

Email: info@olrim.uni-luebeck.de

Phone: +49 451 3101 5224

Fax: +49 451 3101 5204

ePTRI

EUROPEAN PAEDIATRIC TRANSLATIONAL RESEARCH INFRASTRUCTURE

