



EUROPEAN PAEDIATRIC TRANSLATIONAL RESEARCH INFRASTRUCTURE

TOOLKIT FOR PATIENTS BASIC RESEARCH

Begonya Nafria – Fundació Sant Joan de Déu

9^o of July, 2020



This project has received funding from the European Union's Horizon 2020 research and innovation programme under Grant Agreement No 777554

TOOLKIT FOR PATIENTS AND FAMILIES

EPTRI PATIENTS' TOOLKIT: Objectives

- **Educate** patients and families about paediatric research, with a special focus in EPTRI's thematic platforms
- **Inform the general population** about basic research and paediatric medicines development
- Create a **general and interactive collection of reliable resources**, with lay content and flexible navigation to the users accordingly with their needs
- Design a **general video** to explain in lay language the basic research process in drug development and the opportunities for patient involvement
- Offer a **guidance** to incorporate the **voice of the patients** in basic research



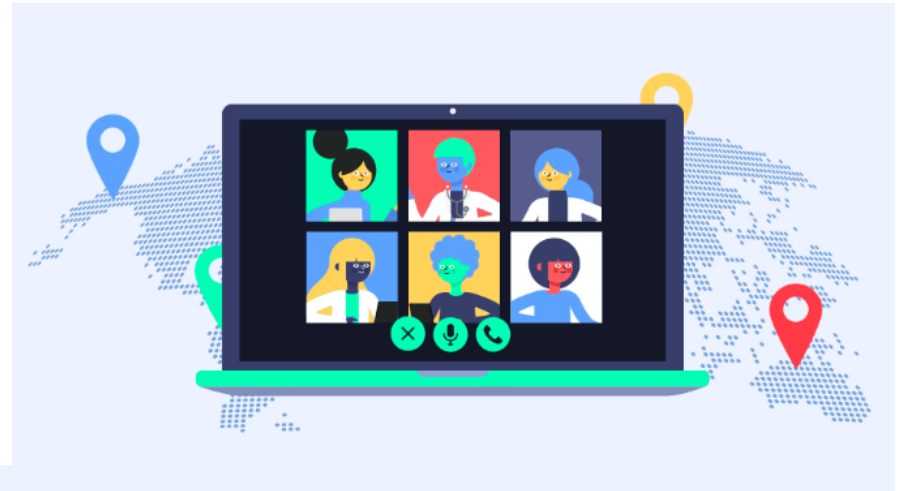
TOOLKIT FOR PATIENTS AND FAMILIES

EPTRI PATIENTS' TOOLKIT: Look & Feel



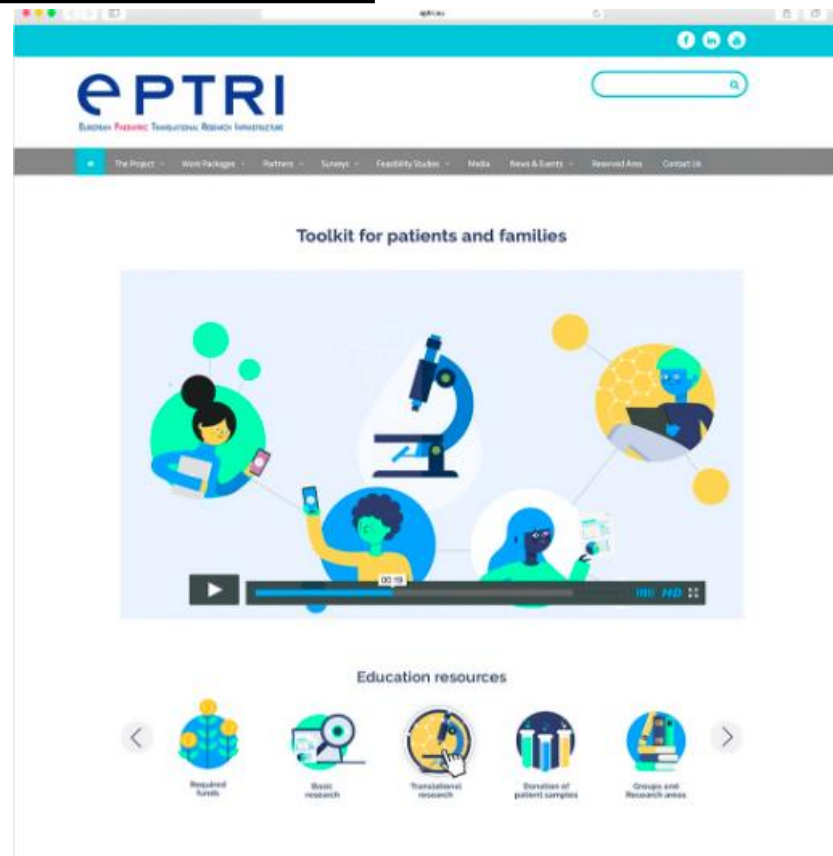
TOOLKIT FOR PATIENTS AND FAMILIES

EPTRI PATIENTS' TOOLKIT: Look & Feel



TOOLKIT FOR PATIENTS AND FAMILIES

EPTRI PATIENTS' TOOLKIT: Interface



TOOLKIT FOR PATIENTS AND FAMILIES

Education resources



Basic research



Groups and lines
of research



Translational
research



Donation of
patients' samples



Animal testing



Patient and
Public
Involvement (PPI)



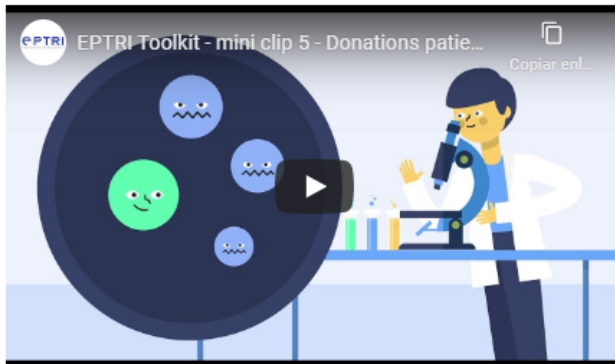
Fundraising



Ethics

TOOLKIT FOR PATIENTS AND FAMILIES

[Home](#) [The Project](#) [Work Packages](#) [Partners](#) [Surveys](#) [Feasibility Studies](#) [Media](#) [News & Events](#) [Reserved Area](#) [Contact Us](#)



Donation of patients' samples

Donation of body fluids, tissues and cells (known as biospecimens) boost biomedical discovery, leading to new diagnostics and treatments that can benefit millions of patients worldwide. Healthy people can donate biospecimens too, as scientists need to compare pathological to healthy samples when conducting experiments. Biospecimens are used to create cell lines or animal models to study the effect of medicines before starting a clinical trial with human patients.

Resources



Donating Biospecimens for Cancer Research: An Expert FAQ



Biobanking



Providing your tissue for research: what you need to know



Cleo: A biobank story



Medical Innovations: Biobanks



About Biobanks



How you can help medical research: donating your blood, tissue and other samples



Advancing Cancer Research Together

[Privacy](#)