



EUROPEAN PAEDIATRIC TRANSLATIONAL RESEARCH INFRASTRUCTURE

EPTRI Outreach and Networking plan

Mariangela Lupo

EPTRI Stakeholders Roundtable

09-07-2020



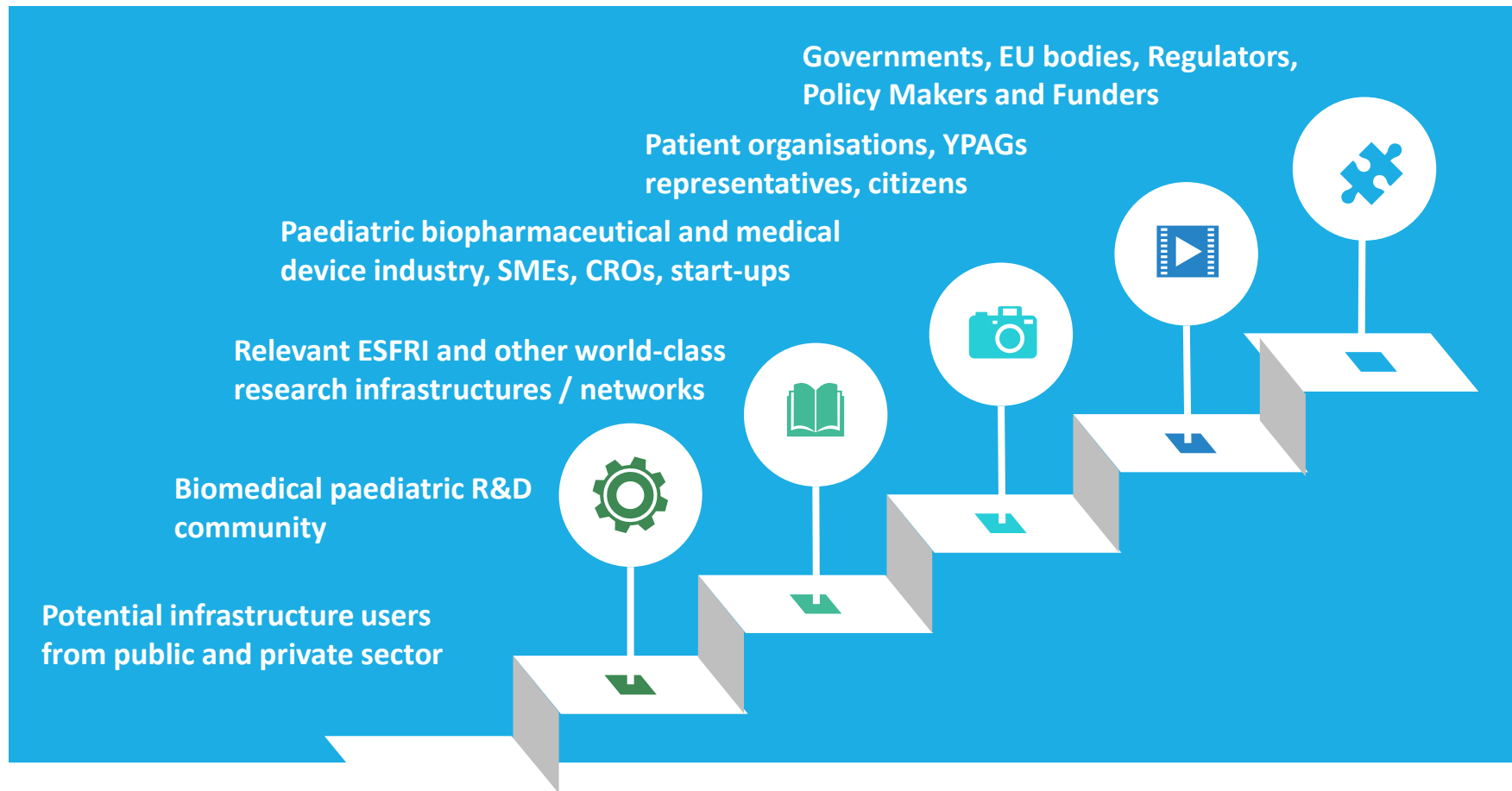
This project has received funding from the European Union's Horizon 2020 research and innovation programme under Grant Agreement No 777554

Outreach and networking strategy



An External Stakeholder Forum will be established

EPTRI target audience



Networking with Governments



**Identification of the
relevant
stakeholders**

**Involvement of the
regional and local
authorities and
testing interest of
governments on
setting up the RI**

**Organisation of
meetings between
the involved
stakeholders to
discuss the possible
type of involvement**

**Formalisation of the
involvement
(endorsement letter,
MoU, partnership
agreement)**

Outreach with paediatric research community

A Working Group will be created to elaborate a position paper on how to strengthen collaboration with the paediatric initiatives



Online consultations will be organised



Training activities, scouting of projects of common interest, meetings organisation/participation



Ad hoc initiatives to address rare diseases



Set up of a centralized service for identification and exploitation of project proposals



Outreach with ESFRI RIs



A Working Group with representatives from relevant Biomedical ESFRI RIS will further investigate the opportunity of common services.

A common position paper will be released with the aim to set up a framework of collaboration, investigate the respective fields of actions and exploit the synergies.

Outreach with Companies

Several meetings will be organised to identify possible areas of collaboration and business opportunities between EPTRI and the different industrial stakeholders, including SMEs and start-ups.

To attract interest from industry, the following actions will be put in place:

- ❖ Communicate the portfolio of TA can be provided regularly
- ❖ Testing the interest of companies in using the EPTRI services
- ❖ Presenting EPTRI in commercial workshops.



Outreach and networking with Patients and Public

A dedicated board of EPFs Youth Group members and YPAGs will be involved.

Dedicated actions such as roundtables and forum discussions, will be foreseen to involve patient organisations, representatives, families, YPAGs

Patients representatives, families and patients' organizations will be also involved

