



EUROPEAN PAEDIATRIC TRANSLATIONAL RESEARCH INFRASTRUCTURE

The EPTRI project challenges

EPTRI Open Meeting – April 2-3, 2020



This project has received funding from the European Union's Horizon 2020 research and innovation programme under Grant Agreement No 777554

EPTRI background

THE PROBLEM: a serious lack of medicines for children



Existing therapies are currently used in lack of specific paediatric studies results, in an off-label manner, in a percentage variable from 30 to 80%, depending by children age and therapeutic category of the drug

This Project has received funding from the European Union's Horizon 2020 programme under Grant Agreement No. 777554

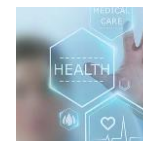
EPTRI Community



29 partners from
21 EU/non EU countries

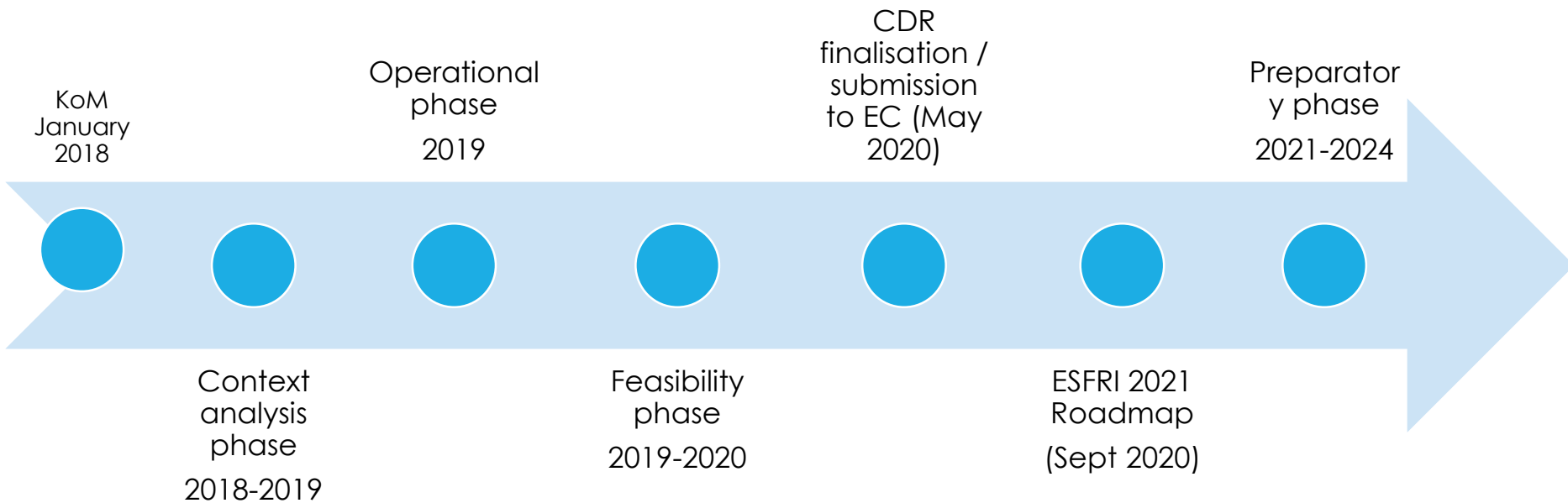


259 research units candidate
as EPTRI providers from
29 EU / non EU countries

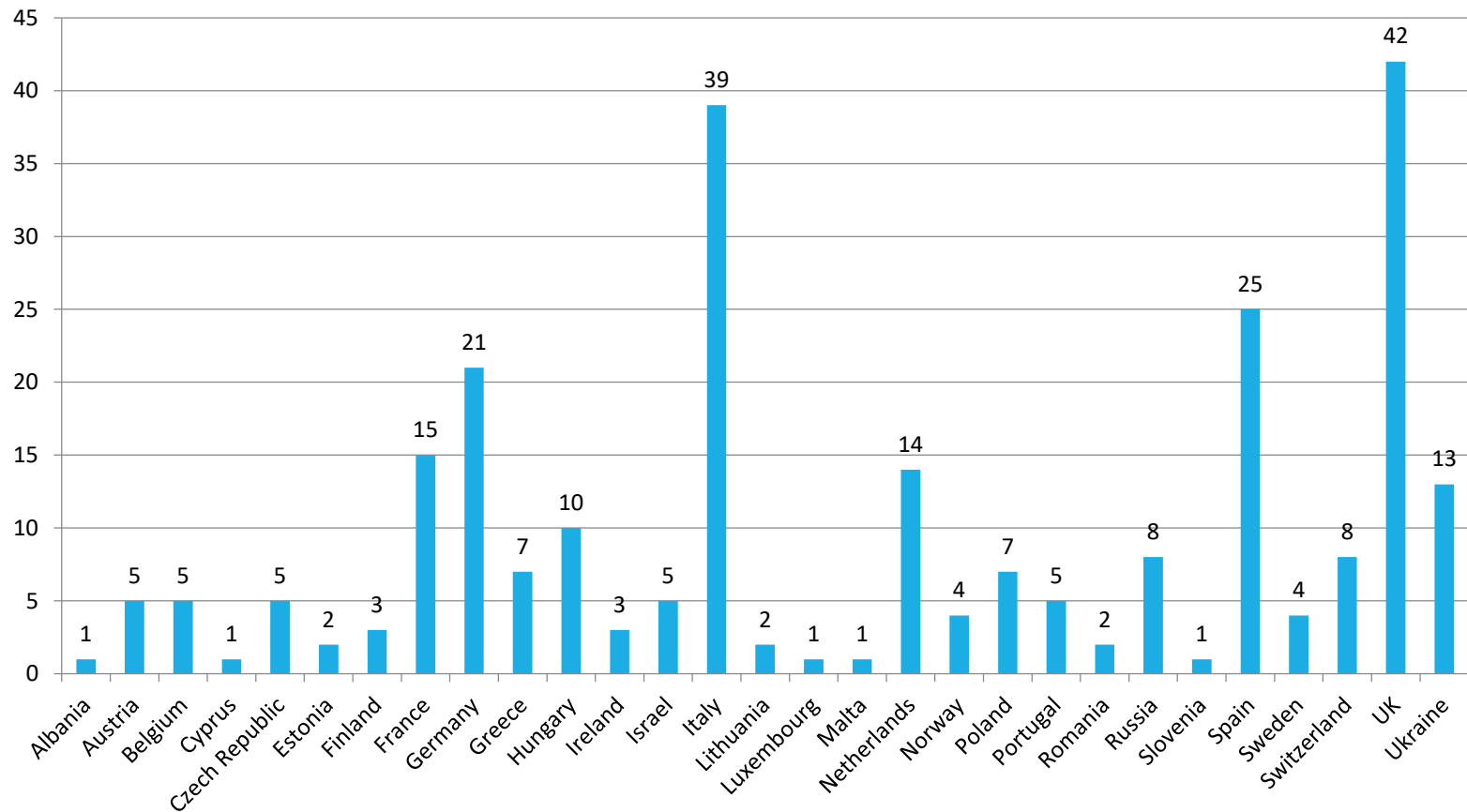


337 potential users responding
to the survey

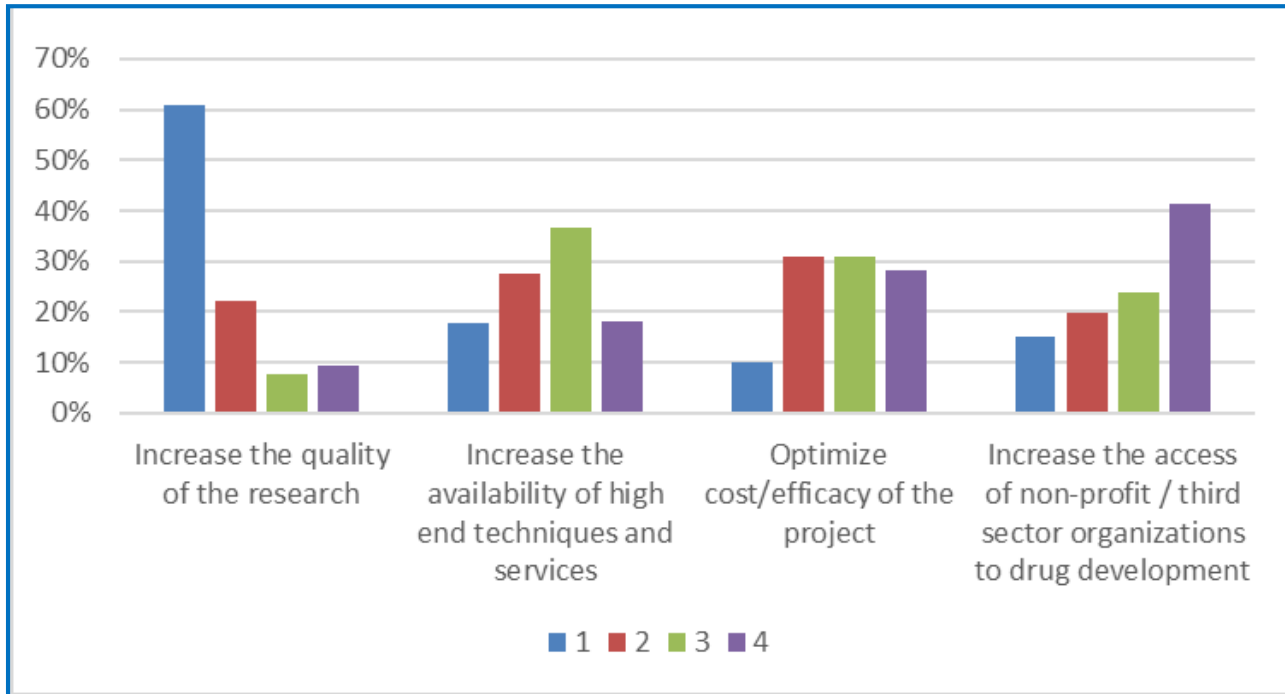
EPTRI life cycle



EPTRI Context Analysis phase

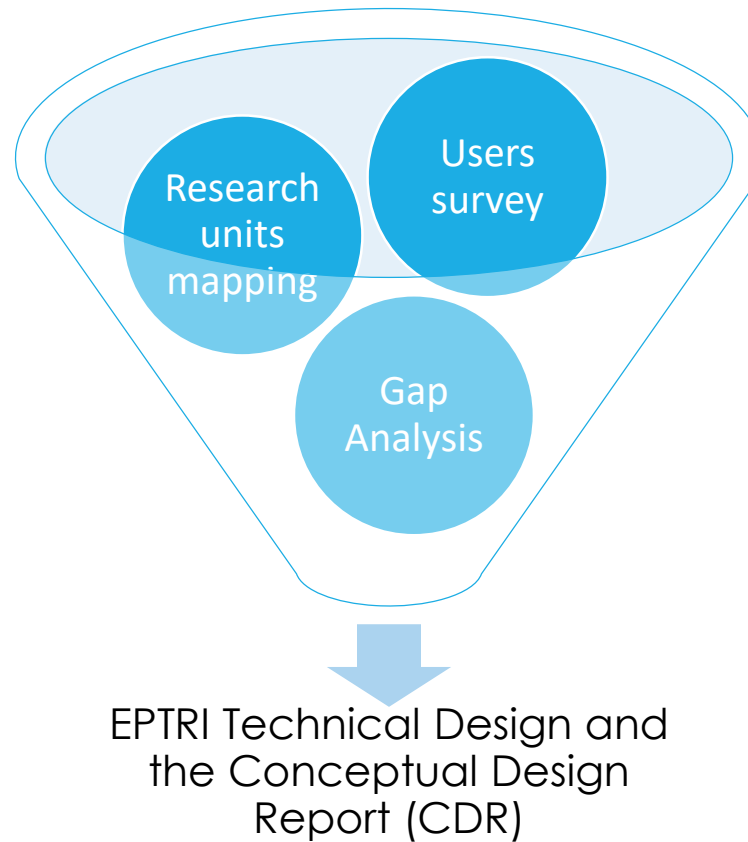


Users survey



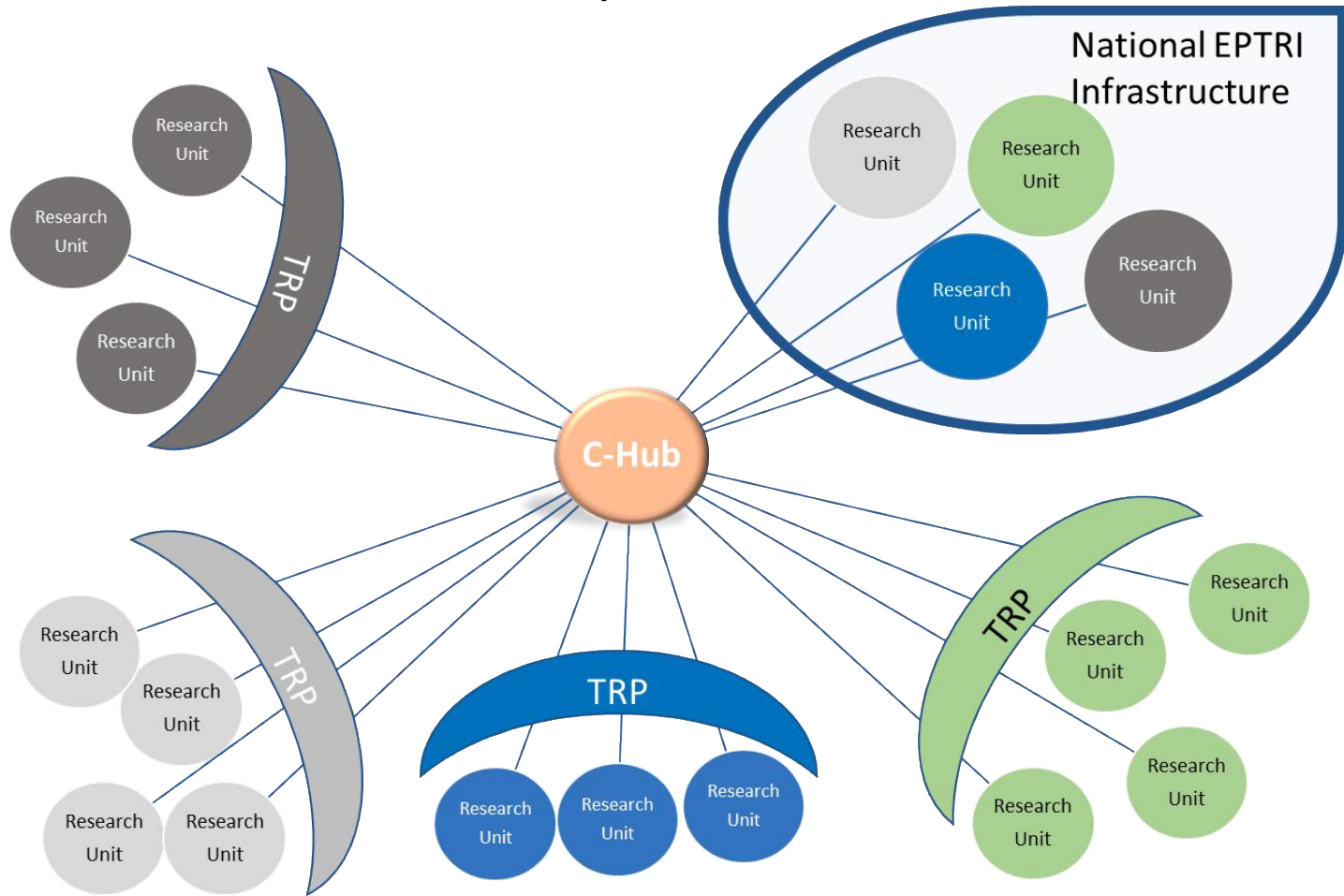
Why use EPTRI?

Operational phase



EPTRI Technical Design

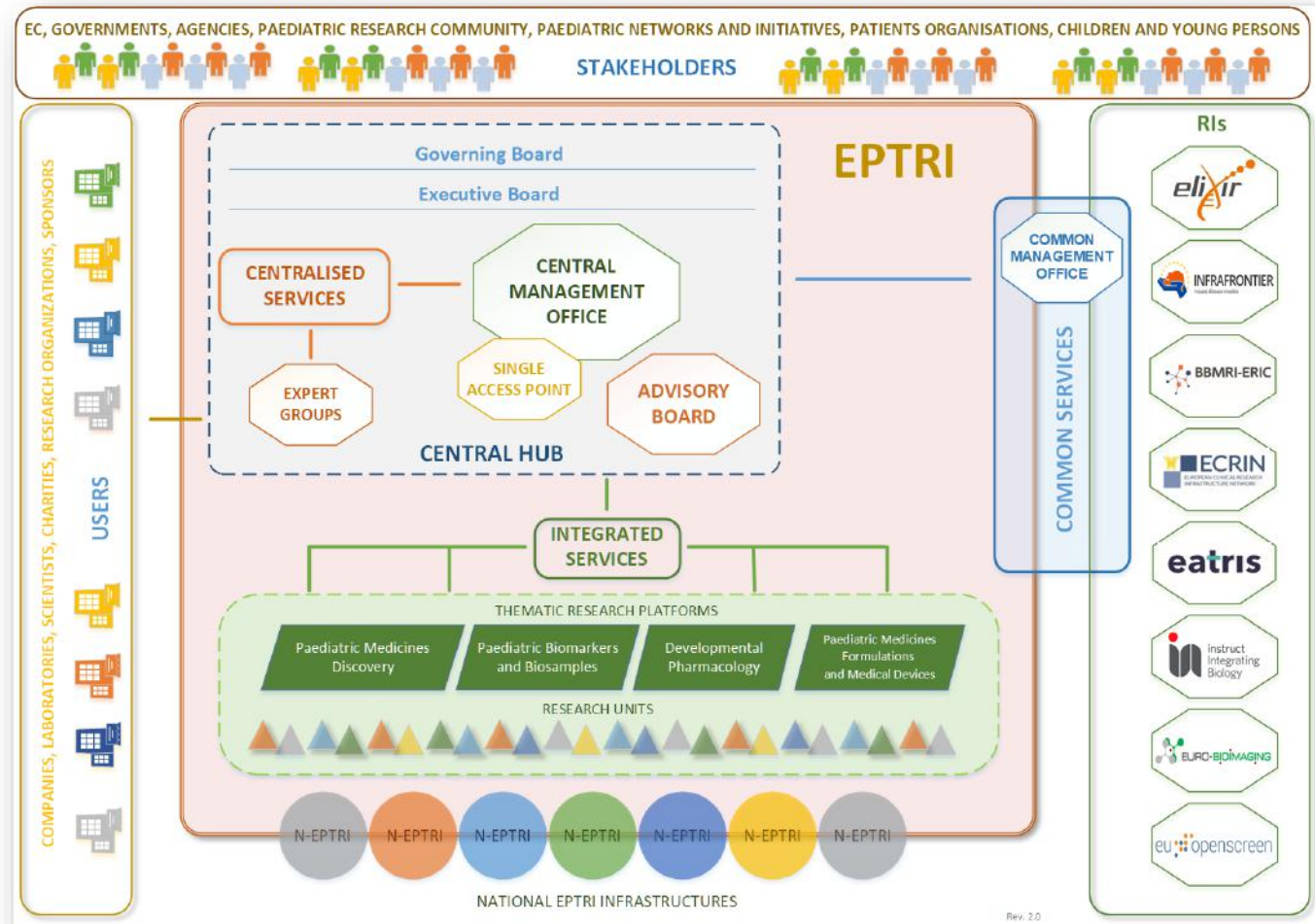
Hub and Spoke model



EPTRI Technical Design

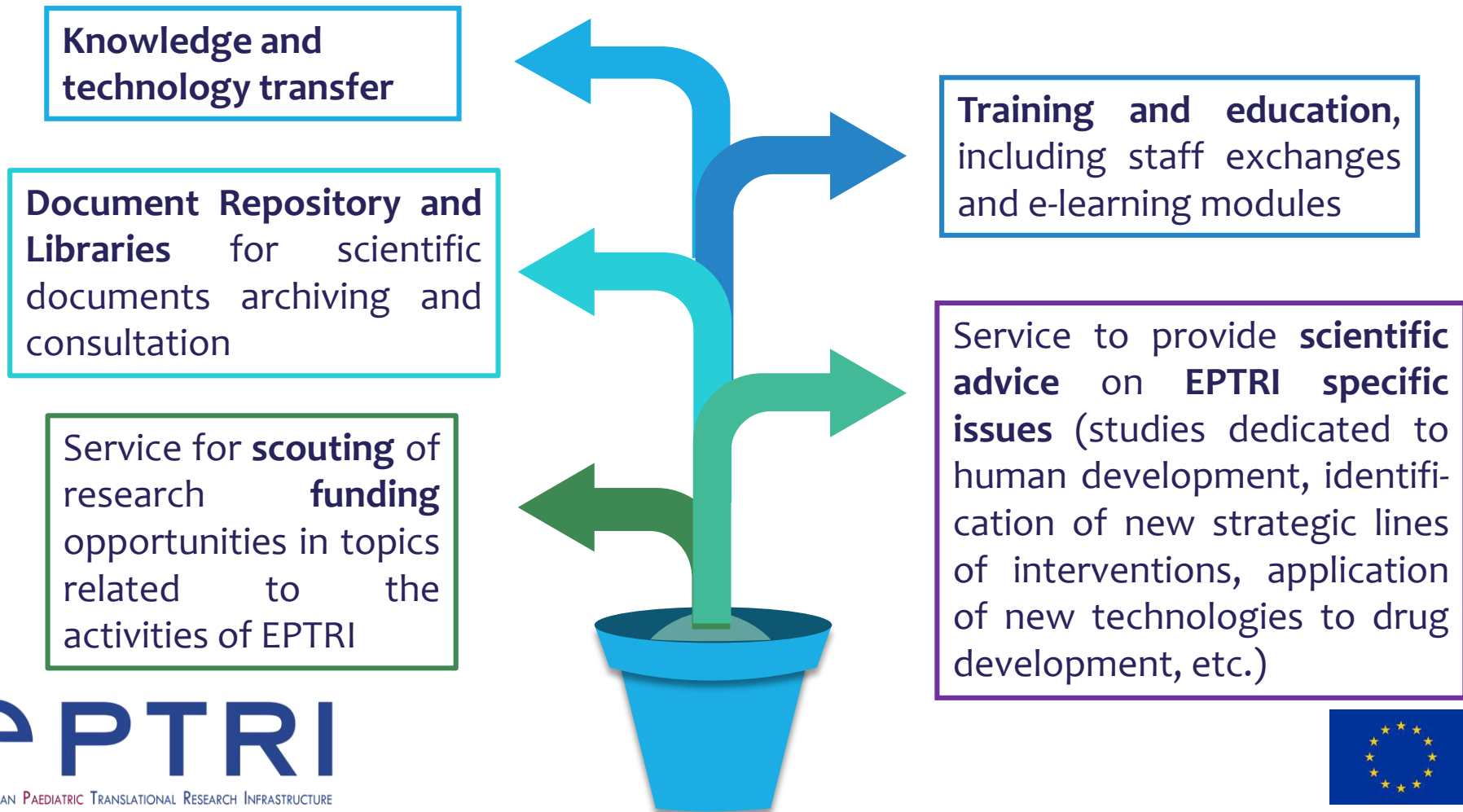
EPTRI services:

- Centralised
- Integrated
- Common



EPTRI single access point and centralised services

Requests for service will be received and managed through the **Single Access Point** that will distribute them according to their specificity.

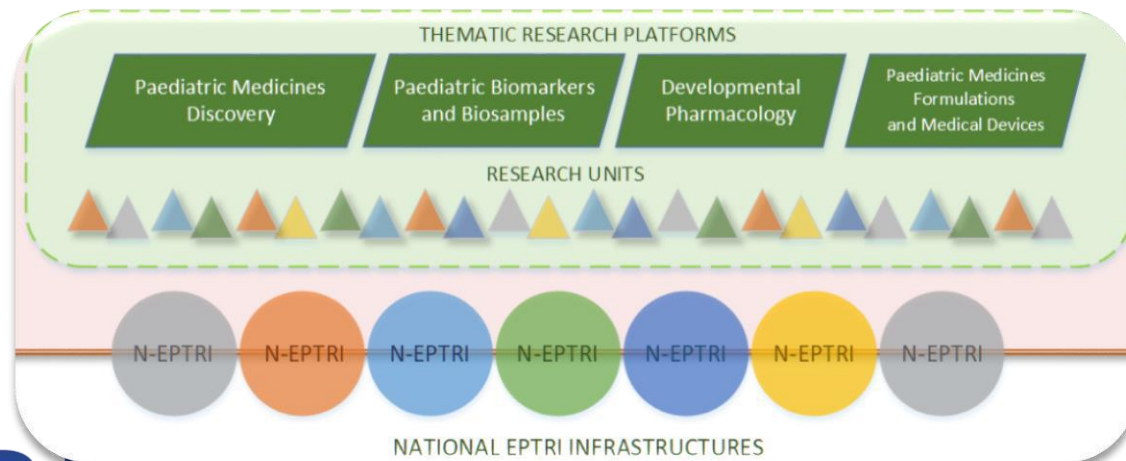


Thematic Research Platforms

Integrated Services will be provided through the thematic research platforms where key enabling technologies and expertise are grouped:

1. Paediatric Medicines Discovery
2. Paediatric Biosamples and Biomarkers
3. Developmental Pharmacology
4. Paediatric Medicines Formulations and Medical Devices

The **Thematic Research Platforms** are conceptual operational groups containing a constellation of Research Units to provide Integrated Services



Global outreach and networking



Contacts with:

- initiatives conducted at national and international level dedicated to paediatric research
- EU and non-EU countries not yet part of EPTRI
- existing RIs, which have been surveyed with the aim to investigate how far the needs of the paediatric research communities are met by the existing RIs and thus to avoid any duplication and redundancy



Collaborations with other RIs and in particular with BBMRI on legal, ethical and societal issues that are paediatric specific, and with ELIXIR on 'paediatric interoperability data' have been also investigated.

Common services

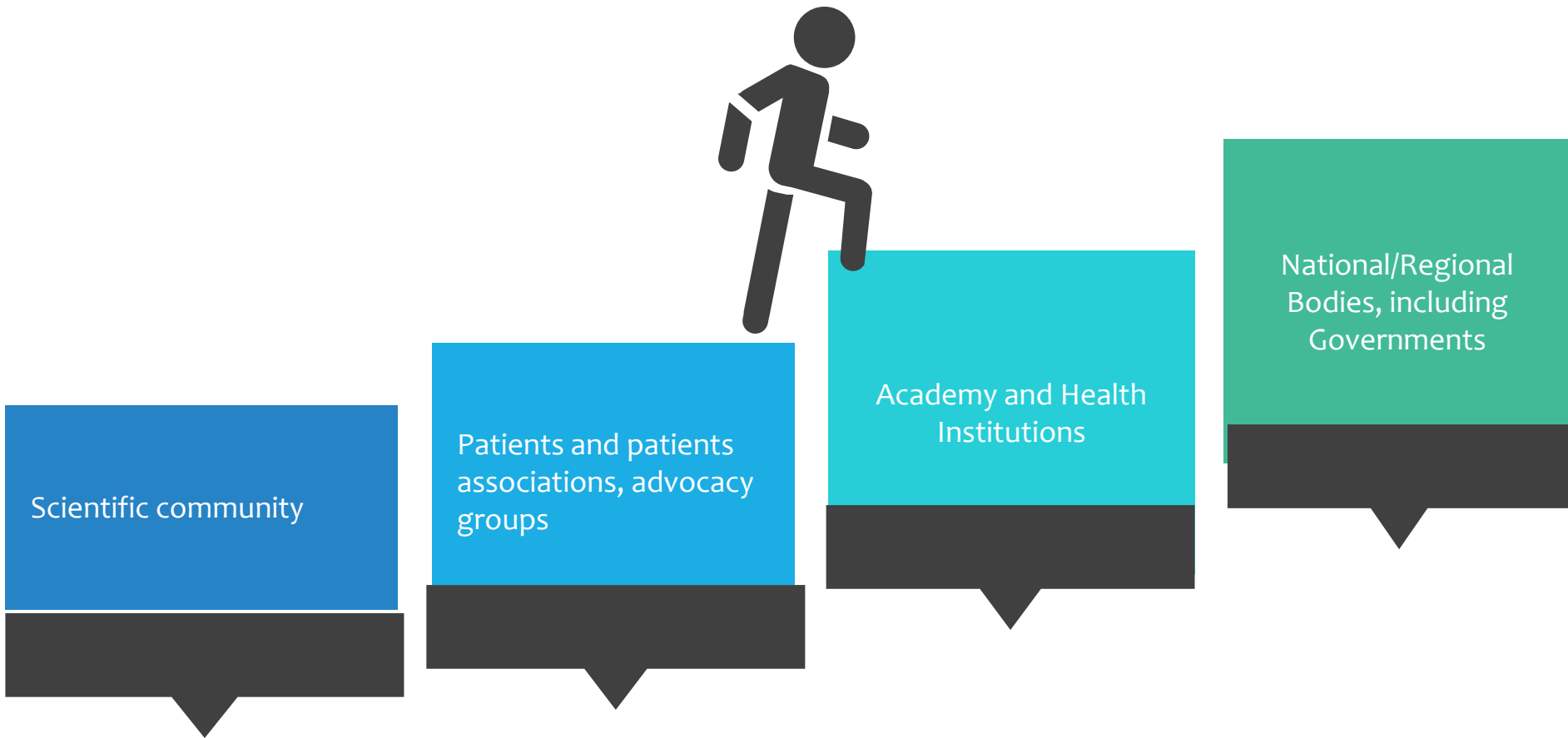
Common service for ELSI support in paediatric research

A common service to ensure ethical, legal and societal support and guidance for those conducting research with children, both biomedical and translational, from the preclinical phase to clinical studies, access policies and education will be developed in collaboration with BBMRI.

Common service for data interoperability in paediatric research

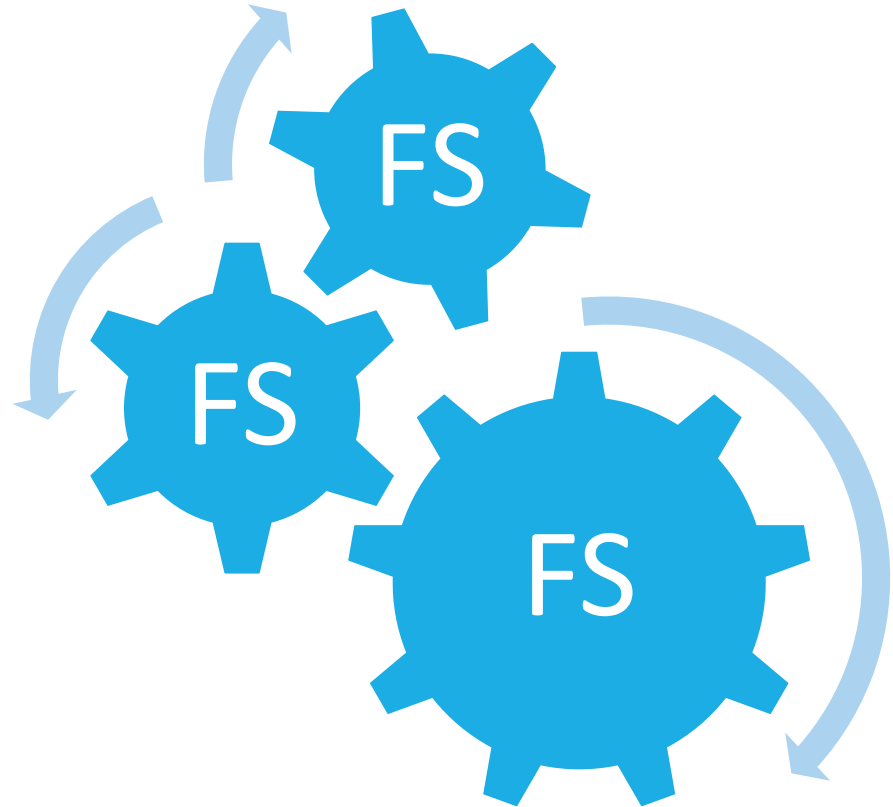
A common service to ensure data interoperability in paediatric research will be created in collaboration with ELIXIR. It will be developed and deployed to facilitate and support use and re-use of data for research purposes, collaboration and sharing of knowledge, experiences and best practices.

EPTRI Supporter

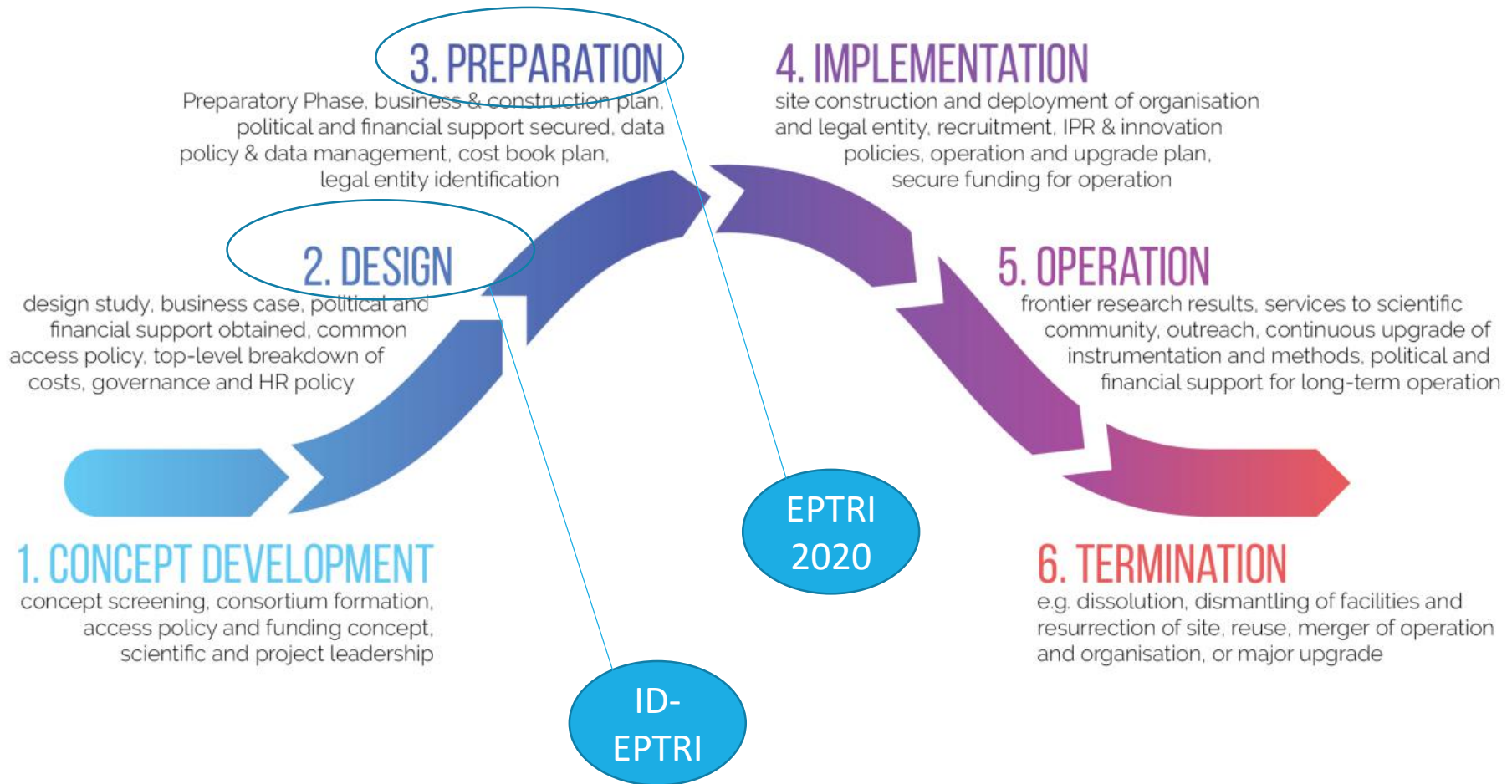


Feasibility studies

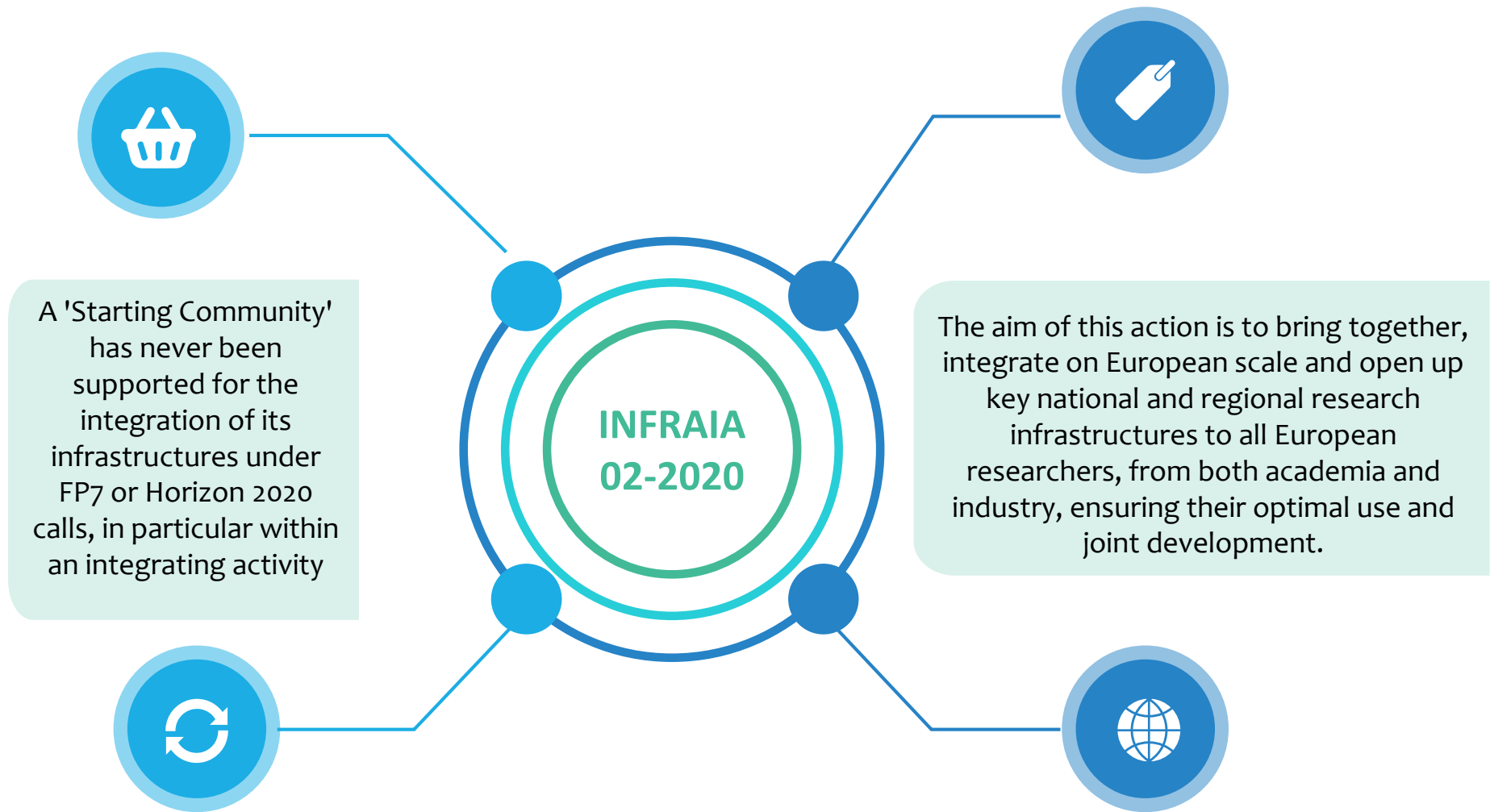
Feasibility study proposals have been submitted by internal and external users and assessed by the Project Advisory Board. They would provide information about services/technologies that EPTRI could offer to support the researchers in developing their idea in the translational phase.



EPTRI life cycle



INFRAIA 02-2020



Integrated activities

Networking activities

To foster a culture of co-operation between research infrastructures, scientific communities, industries and other stakeholders as appropriate, and to help develop a more efficient and attractive European Research Area

Trans-national access or virtual access activities

To support scientific communities in their access to the identified key research infrastructures

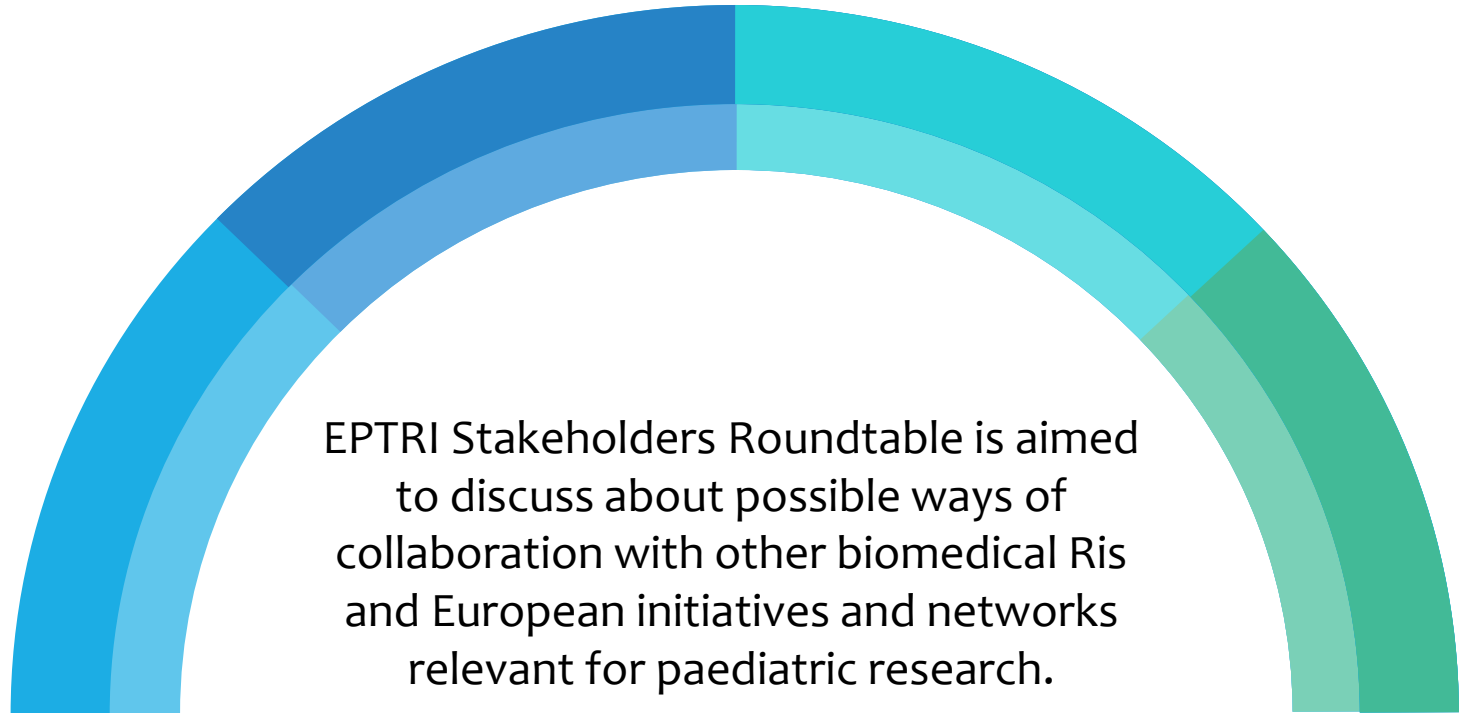
Joint research activities

To improve, in quality and/or quantity, the integrated services provided at European level by the infrastructures

All three categories of activities are mandatory as synergistic effects are expected from these different components.

Budget: 5 Million

EPTRI Stakeholders Roundtable



It will be organised as a discussion around some key documents that will be shared in advance with the invited participants.

