

H2020-INFRADEV-2017-1

## **Deliverable 11.3** **“Project Website”**

Revision date  
**23/04/2018**

Dissemination Level	
Public	<input checked="" type="checkbox"/>
Restricted to other programme participants (including the Commission Services)	<input type="checkbox"/>
Restricted to a group specified by the consortium (including the Commission Services)	<input type="checkbox"/>
Confidential, only for members of the consortium (including the Commission services)	<input type="checkbox"/>

Due Date of Deliverable  
**30/03/18**

Date of issue by Beneficiary  
**04/05/2018**

Date of approval by SC  
**18/05/18**

Start date  
**01/01/2018**

Duration  
**2 years**

Project Coordinator  
**Consorzio per Valutazioni Biologiche e  
Farmacologiche**

Reference WP  
**WP 11 – COMMUNICATION, NETWORKING AND PATIENTS  
INVOLVEMENT**

Reference Activity  
**Task 11.2 – Project Website**

Beneficiary in charge  
**PENTA**



## Index

INDEX .....	2
1. LIST OF AUTHORS .....	3
2. EXECUTIVE SUMMARY.....	4
3. CONTENTS .....	5
3.1. SETUP OF THE WEBSITE.....	5
3.2. DETAILED PRESENTATION OF THE PROJECT WEBSITE .....	6
3.3. MAINTENANCE OF THE WEBSITE .....	13
4. DOCUMENT HISTORY .....	14

## 1. List of authors

Name	Institution
Giulio Vecchia	PENTA

## 2. Executive Summary

The ID-EPTRI website is the output of **Task 11.2 - Project website** in Work Package 11.

The objective of this task is to create an online platform for informing the general public about the objectives and activities of the Project. The ID-EPTRI public website is a major dissemination tool intended to facilitate the spread of Project's information. It's the core element of the external communication of the ID-EPTRI Project.

This deliverable provides a general presentation of the website and describes the format, the design, the technology used, the development process and functionalities.

### 3. Contents

#### **3.1. Setup of the website**

The Project website domain is: <https://eptri.eu>

The design and set up of the ID-EPTRI website was assigned to O-zone srl, which was appointed following a market research to get the best value for money, in order to provide technical designing and development of the website.

In January 2018, PENTA - in collaboration with CVBF - designed the website architecture and then shared it with the Project partners through a collaborative online tool. This was also used to collect contents and agree on a narrative style. Work Package Leaders were requested to review the description of the Project and of their Work Package, in order to ensure that the website responds to the Project and the beneficiaries communication needs and that the contents are easy to understand for the general public. The website was then developed by O-zone in WordPress.

It is composed of two sections:

- a public area, freely accessible via web
- a private area reserved to the Consortium Partners.

### **3.2. Detailed presentation of the Project Website**

The Homepage contains the Project summary, the contact information, a preview of the news and a tool for the newsletter subscription. The Project logo and the full title are displayed at the page bottom, while the EU funding is acknowledged in the footer, following the ID-EPTRI Grant Agreement requirements and European Commission Horizon Regulations and communication guidelines (Commission Regulation (EU) No 1290/2013 laying down the rules for participation and dissemination in "Horizon 2020 - the Framework Programme for Research and Innovation (2014-2020)).

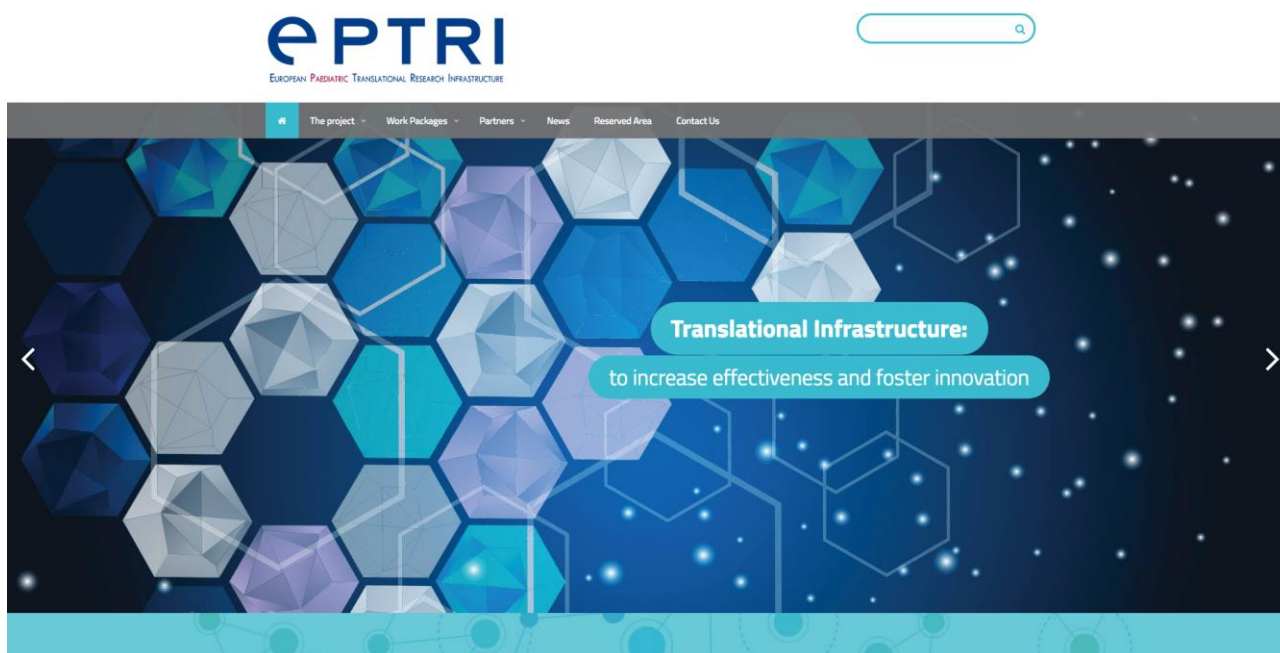
A password-protected access to the ID-EPTRI collaborative platform ([Teamwork](#), see D1.3 – Project Management Tools, Section 1.1) is available through a button on the horizontal menu on the top of the page. A login and a password have already been provided to each partner.

The following screenshot shows the general structure, design and spatial organization of the page.

At the top of the page six sections can be found:

1. The Project
2. Work Packages
3. Partners
4. News
5. Reserved Area
6. Contact us

Along with a search bar to look for information on the website.



[The project](#)
[Work Packages](#)
[Partners](#)
[News](#)
[Reserved Area](#)
[Contact Us](#)

## EPTRI

The European Paediatric Translational Research Infrastructure is a new complementary Research Infrastructure (RI) in the context of the existing RIs intended to putting together and networking all the available competences and technologies useful to enhance paediatric research in paediatric medicines from drug discovery and early development phases to be translated into clinical phases and medicines uses.

[G+](#)
[Twitter](#)
[LinkedIn](#)
[Facebook](#)

### CONTACTS

Consorzio per Valutazioni Biologiche e Farmacologiche  
Via Nicolò Putignani 178  
70122 Bari (Italy)  
Phone +39 080 97 51 974

### NEWS

New scientific workshop on translational research for myeloproliferative disorders: from animal models to clinical trials, April 24th, Rome - Italy

"EPTRI: a new European Research Infrastructure to foster the translation research in paediatrics". Agenda now available

SAVE THE DATE - 10th Conference of the European Paediatric Formulation Initiative (EuPFI) "Formulating better Medicines for Children", September 11-13th, London - UK

### NEWSLETTER

First Name

Last Name

Email address:

[Sign up](#)

"The Project" section brings the user to the "[About](#)" page which gives a more complete overview of the Project.

[The project](#)
[Work Packages](#)
[Partners](#)
[News](#)
[Reserved Area](#)
[Contact Us](#)

[About](#)
[Governance](#)

The European Paediatric Translational Research Infrastructure, EPTRI, is a new complementary Research Infrastructure (RI) in the context of the existing RIs intended to putting together and networking all the available competences and technologies useful to enhance paediatric research in paediatric medicines from drug discovery and early development phases to be translated into clinical phases and medicines uses.

EPTRI arises from the need to find answers to the serious lack of medicines for children in EU and worldwide and to propose developmental models for paediatric medicines that integrate technology-driven aspects with clinical trials.

The project ID-EPTRI, coordinated by Consorzio per Valutazioni Biologiche e Farmacologiche (CVBF) and funded within the H2020-INFRADEV-01-2017 programme, aims to design the framework for the new RI providing a conceptual design report (CDR) of EPTRI describing the scientific and technical requirements as well as the key components of the new RI. Five technical and scientific domains have been identified:

1. Paediatric Medicines Discovery
2. Biomarkers
3. Paediatric Pharmacology
4. Formulation Science
5. Underpinning Paediatric Studies.

To prepare the Conceptual Design Report (CDR), the project will encompass three phases. During the Context Analysis phase, that will be performed in all the five technical and scientific domains identified, the perceived value and the possible gaps to be covered will be estimated, by enquiring the scientific Communities, the concerned national Authorities and many other Stakeholders.

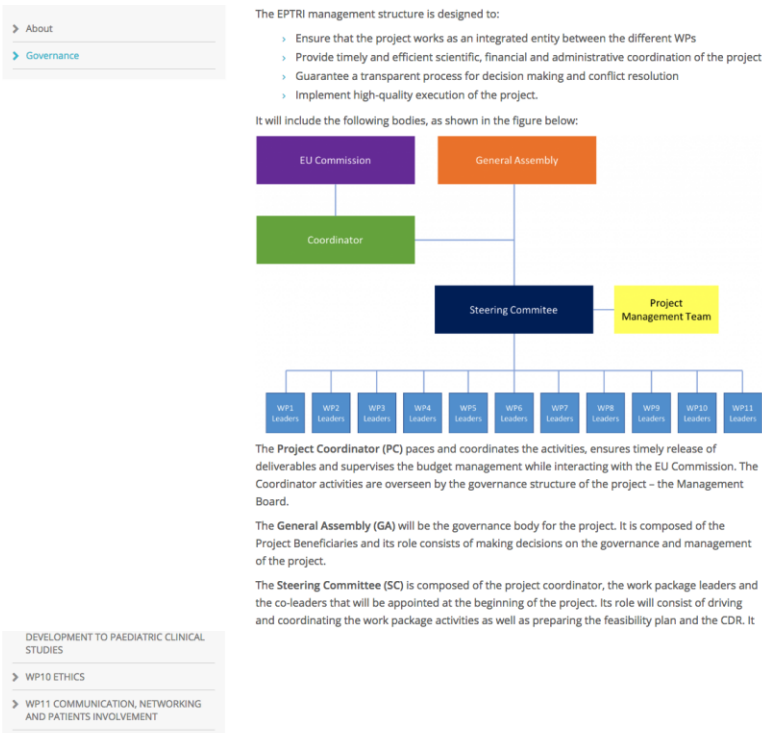
During the Operational phase, the different components of the new RI will be planned, including governance model, strategies for interaction with national Authorities and the existing RIs, the IT-architecture model, services to be provided and a business plan.

In the second year of the project, a Feasibility phase is proposed to develop virtual exercises simulating the operations of the RI to work as a "one-stop-shop" for advice in paediatric drug development.

The ability of EPTRI should be tested in the following domains:

- support researchers in many methodological areas
- foster the technology innovation in all the academic and clinical settings

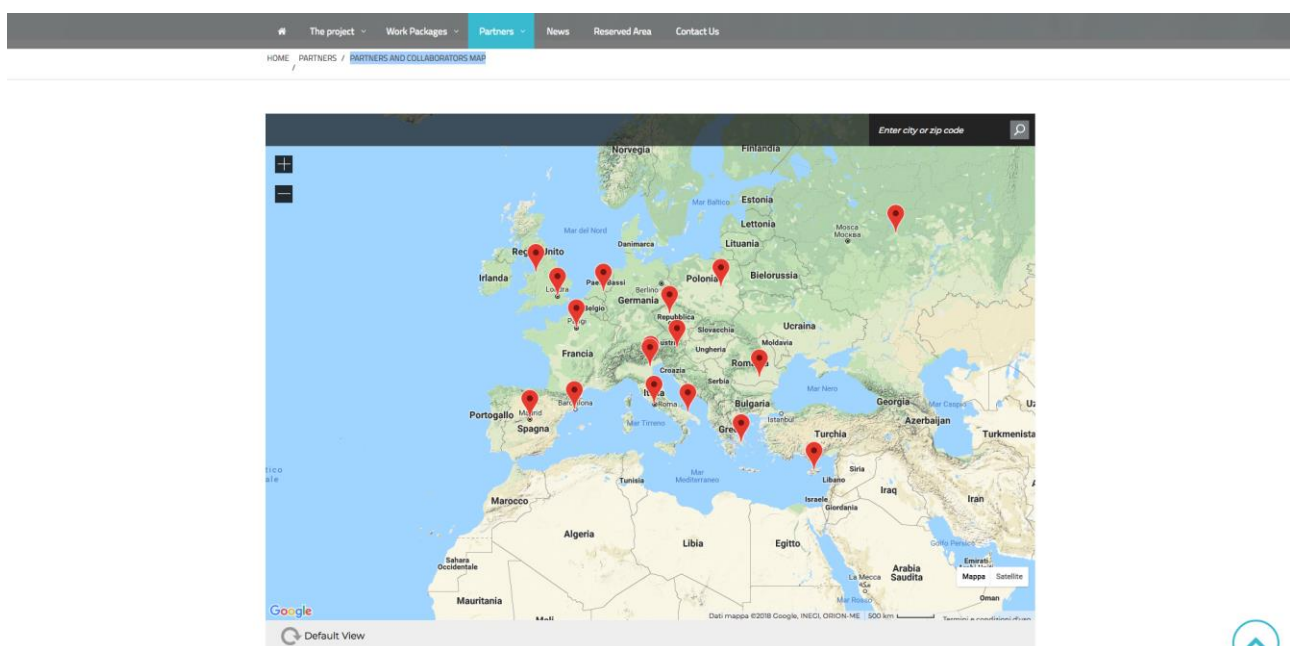
There is also a section reserved to the description of the Project "[Governance](#)", in which the different Project Bodies are explained along with a graphical representation of the Governance



The "[Work Packages](#)" section contains the description of each Work Package of which the Project is composed of.

The "[Partners](#)" section is divided into three sub-sections:

1. "[Partners and Collaborators Map](#)", where the geographical location of each member is indicated. By clicking on a flag, a pop-up window opens with a brief description of the partner organization, its logo and a link to its website.





2. A full list of the Consortium members is provided in the "[Project Partners](#)" section, where a longer description than that contained in the map is included:

The screenshot shows the website for the Fondazione PENTA Onlus. The header includes navigation links: The project, Work Packages, Partners, News, Reserved Area, and Contact Us. The main title is "Fondazione PENTA Onlus – for the treatment and care of children with HIV (PENTA)". Below the title, there is a breadcrumb trail: HOME / PARTNERS / FONDAZIONE PENTA ONLUS – FOR THE TREATMENT AND CARE OF CHILDREN WITH HIV (PENTA). The main content area is divided into two columns. The left column contains a list of partners and collaborators, including the Consorzio per Valutazioni Biologiche e Farmacologiche (CVBF), Fondazione PENTA Onlus, EATRIS ERIC, University College London (UCL), Research and Innovation Center in Information Communication & Knowledge Technologies (ATHENA), BioBanks and BioMolecular resources Research Infrastructure Consortium (BBMRI-ERIC), Cyprus Institute of Neurology and Genetics (CING), and Assistance Publique – Hôpitaux de Paris (AP-HP). The right column features a circular logo for the Paediatric European Network for Treatment of AIDS (PENTA) and a text block describing the foundation's mission and the PENTA-ID network. A "Go to website" link is provided at the bottom of the right column. A blue circular arrow icon is visible in the bottom right corner.

3. The "[Third Parties](#)" section contains a list of organizations linked to the Project partners through a contract for performing some specific activities:

The screenshot shows the website for the TEDDY European Network of Excellence for Paediatric Clinical Research. The header includes navigation links: The project, Work Packages, Partners, News, Reserved Area, and Contact Us. The main title is "TEDDY European Network of Excellence for Paediatric Clinical Research". Below the title, there is a breadcrumb trail: HOME / PARTNERS / TEDDY EUROPEAN NETWORK OF EXCELLENCE FOR PAEDIATRIC CLINICAL RESEARCH. The main content area is divided into two columns. The left column contains a list of third parties, including The University of Bari Aldo Moro, Azienda Ospedaliero Universitaria Consorziale Policlinico di Bari - Ospedale Pediatrico "Giovanni XXIII", Fondazione per la Ricerca Farmacologica Gianni Benzi Onlus, Università degli Studi di Milano Bicocca - BBMRI.it, Fundación para la Investigación Biomédica del Hospital Universitario La Paz, and Technion Research & Development Foundation Ltd. The right column features a text block describing the network's mission and the TEDDY consortium. A "Go to website" link is provided at the bottom of the right column. A blue circular arrow icon is visible in the bottom right corner.

4. the "[Supporters](#)" section shows the list of Institutions with a link to their official websites that are not directly involved in the ID-EPTRI Project but that have officially endorsed it:

[The project](#)
[Work Packages](#)
[Partners](#)
[News](#)
[Reserved Area](#)
[Contact Us](#)

Supporters

[HOME](#)
[PARTNERS](#)
[SUPPORTERS](#)

Partners and Collaborators Map

Project Partners

Third parties

Supporters

Below you can find the list of Institutions, not directly involved in ID-EPTRI, that have officially endorsed the Project:

- Apulia Region, Italy;
- Arthritis and Rheumatism Association Malta (ARAM), Malta;
- Asociación Española de Pediatría (AEP), Spain;
- Associação Nacional de Displasias Ósseas (ANDO), Portugal;
- Childhood Cancer International (CCI), The Netherlands;
- Cyprus Government;
- Cyprus Institute of Neurology and Genetics, Cyprus;
- Department of Paediatric Neurology, University Children's Hospital Ljubljana, Slovenia;
- European Network for Rare and Congenital Anaemias (ENERCA), Spain;
- Eurordis, Rare Disease Europe, France;
- Fundación MÁS QUE IDEAS, Spain;
- Foundation of child neurology, Slovenia;
- Fundación ALPE acondroplasia, Spain;
- Greek Carers Network - EPIONI, Greece;
- LIFE (ZIVOT) - Organization for children rare diseases, Serbia;
- Ministry of Economic Development, Russia;
- Ministry of Education, University and Research, Italy;
- Ministry of Health, Albania;
- Ministry of Health, Italy;
- Ministry of Health, Poland;
- Ministry of Welfare, Iceland;
- Norwegian Melanoma Patient Association (Folkekraftforeningen), Norway;
- Paediatric Institute for Education, Research and Innovation, Edinburgh

The “[News](#)” section is being used to announce Projects events and meetings, important Project achievements, information on field related activities developed by other subjects and of interest for the Consortium and its stakeholders.

PENTA, CVBF and FSJD will pay a special attention to maintain it up-to-date, by requesting partners to share information.

[The project](#)
[Work Packages](#)
[Partners](#)
[News](#)
[Reserved Area](#)
[Contact Us](#)

News

[HOME](#)
[NEWS](#)

NEWS

A SECOND VIDEO OF THE ID-EPTRI KICK-OFF MEETING IS NOW AVAILABLE

Feb 28, 2018

We would like to thank, once again, all the participants to the ID-EPTRI Kick-Off Meeting in Rome, it was a major step towards the success of the Project. To relive that important moment, a new video is available.

VIEW POST +

NEWS

Recent Posts

A second video of the ID-EPTRI Kick-off Meeting is now available

Accelerating Paediatric Formulation Development – the SPaeDO-UK project meeting in London, March 28th 2018

A video of the Kick-off meeting now available

The Kick-off meeting in Rome, 15th -16th January 2018 was a success!

Search

The “[Contact Us](#)” section offers different means to get in contact with the Consortium:

- Coordinator’s office phone number
- Consortium general email address
- Web-based contact form.

A section dedicated to Project “Publications” and one dedicated to “Communication Materials”.

An additional section dedicated to the description of the survey questionnaire developed within WP3 will be added to the website and will contain objectives of the survey, to whom it is addressed, in order to present the activities carried out in the context analysis. One sub-section, under the News section, to upload all the Project Newsletters will also be added.

Icons of social media will be available on the EPTRI website to capture people interest and get them to follow, like, and share the project contents also through these channels. The social media icons will be also displayed on each page of the news published on the website.



### ***3.3. Maintenance of the website***

FSJD as WP11 Leader is in charge for coordinating the contents collection in collaboration with CVBF and PENTA for uploading them into the website and more generally for the website maintenance and update.

Google Analytics have been set up to obtain traffic patterns and trends for the project website.

All Partners have been requested to actively contribute to keep the website updated with the Project development and achievements, by periodically reviewing the description of activities and posting news. For this purpose, each partner shall also identify a **dissemination referee** for information sharing and gathering in order to allow for stable internal communication channels in support of timely overall dissemination of information and results. The WP11 Leader will keep regular contacts (on a monthly basis) with all identified referees, while these are asked to autonomously keep the team updated on project related news/events to be communicated.

## 4. Document History

Date	Author	Changes
20/03/18	Giulio Vecchia	First Draft
	M. Lupo	Comments
13/04/18	Begonya Nafria	Comments
04/05/18	Giulio Vecchia	Submission to SC